

STATE OF WISCONSIN DEPARTMENT OF TRANSPORTATION

PLAN OF PROPOSED IMPROVEMENT

STH 116 - WEST COUNTY LINE

TOWN OF WINNECONNE, TOWN OF POYGAN

CTH D WINNEBAGO COUNTY

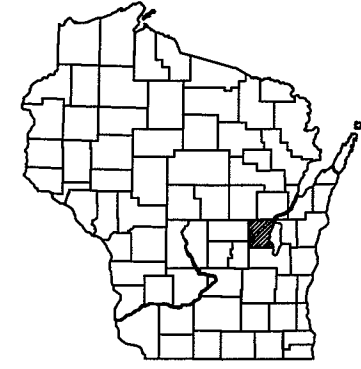
STATE PROJECT	FEDERAL PROJECT	
	PROJECT	CONTRACT
6456-01-71		

ORDER OF SHEETS

SECTION NO. 1	TITLE
SECTION NO. 2	TYPICAL SECTIONS AND DETAILS
SECTION NO. 3	MISCELLANEOUS QUANTITIES (INCLUDES EROSION CONTROL)
SECTION NO. 5	PLAN

TOTAL SHEETS = ____

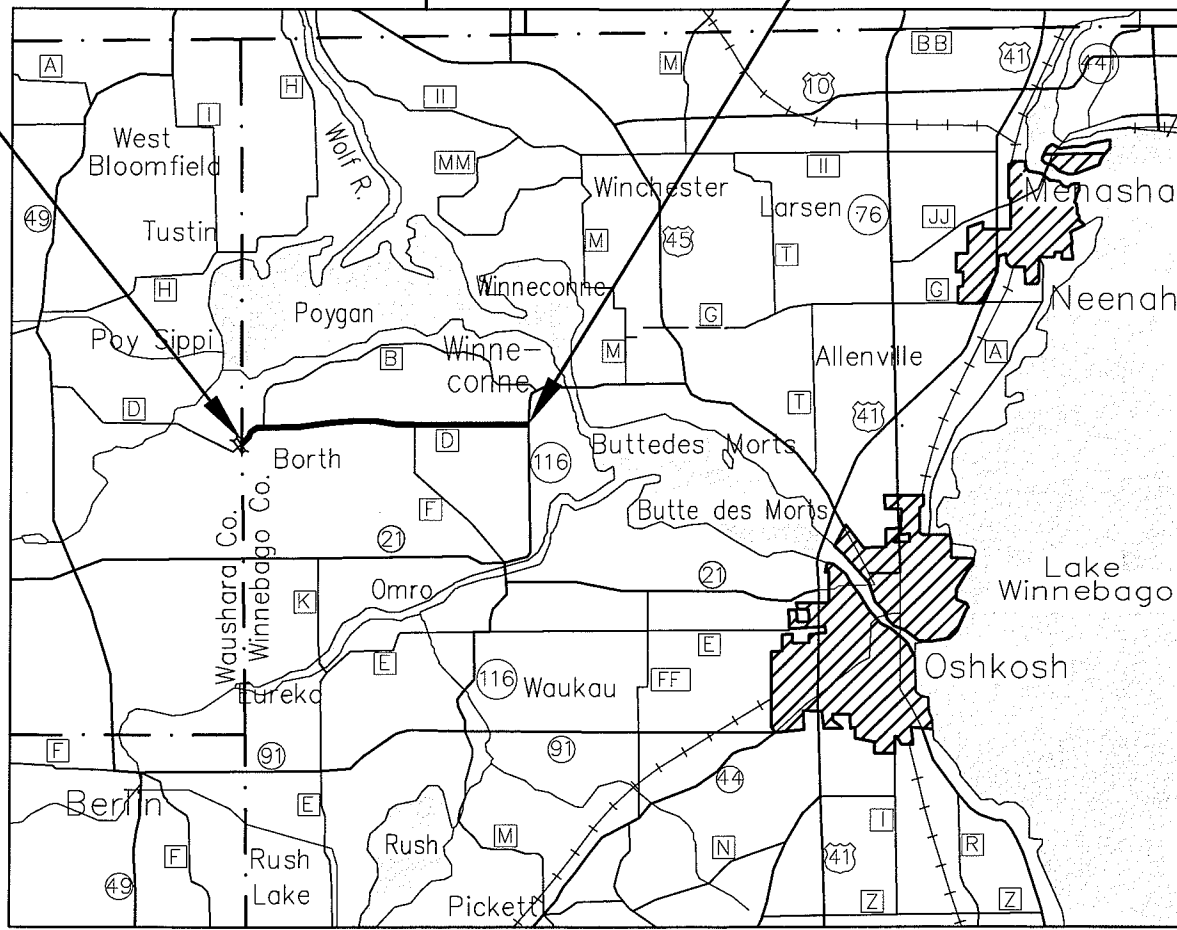
COPY



BEGIN PROJECT
STA. 28+25
N - 500796.61
E - 702921.70

END PROJECT
STA 426+77.33
N - 502758.71
E - 741628.19

STATE PROJECT NUMBER
6456-01-71



DESIGN DESIGNATION

A.D.T. (2010)	=	1550
A.D.T. (2030)	=	1950
D.H.V. (2030)	=	215
D.D.	=	62-38
T. (% OF A.D.T.)	=	6.3
DESIGN SPEED	=	55 MPH
ESALS	=	240,900

CONVENTIONAL SYMBOLS

PLAN	PROFILE
CORPORATE LIMITS	GRADE LINE
PROPERTY LINE	ORIGINAL GROUND
LOT LINE	MARSH OR ROCK PROFILE (To be noted as such)
LIMITED HIGHWAY EASEMENT	SPECIAL DITCH
EXISTING RIGHT OF WAY	GRADE ELEVATION
PROPOSED OR NEW R/W LINE	CULVERT (Profile View)
SLOPE INTERCEPT	UTILITIES
REFERENCE LINE	ELECTRIC
EXISTING CULVERT	FIBER OPTIC
PROPOSED CULVERT (Box or Pipe)	GAS
COMBUSTIBLE FLUIDS	SANITARY SEWER
MARSH AREA	STORM SEWER
WOODED OR SHRUB AREA	TELEPHONE
	WATER
	UTILITY PEDESTAL
	POWER POLE
	TELEPHONE POLE

	ROCK
	LABEL
	95.36
	E
	FO
	G
	SAN
	SS
	T
	W

LAYOUT
SCALE 0 1 MILE

TOTAL NET LENGTH OF CENTERLINE = 7.548 MILES

-" COORDINATES ON THIS PLAN ARE REFERENCED TO THE WISCONSIN COUNTY COORDINATE SYSTEM," WINNEBAGO COUNTY

ACCEPTED FOR
WINNEBAGO COUNTY

11/30/09 DATE *John M. Haase* (SIGNATURE)

ORIGINAL PLANS PREPARED BY
McMAHON
ENGINEERS ARCHITECTS

STATE OF WISCONSIN
DEPARTMENT OF TRANSPORTATION

PREPARED BY
SURVEYOR McMAHON
DESIGNER McMAHON

MANAGEMENT CONSULTANT SEH
C.O. EXAMINER _____

APPROVED FOR THE DEPARTMENT

DATE: _____

MANAGEMENT CONSULTANT SIGNATURE _____

PROJECT ID: 6456-01-71

COUNTY: WINNEBAGO

GENERAL NOTES

NO TREES OR SHRUBS ARE TO BE REMOVED WITHOUT THE APPROVAL OF THE ENGINEER.

A SAWED JOINT IS REQUIRED WHERE NEW HMA PAVEMENT MATCHES EXISTING ASPHALTIC CONCRETE SURFACE.

TRAFFIC CONTROL DEVICES SHALL BE ADJUSTED TO FIT FIELD CONDITIONS AS DIRECTED BY THE ENGINEER. NO WORK MAY BEGIN UNTIL PROPER TRAFFIC CONTROL DEVICES ARE PLACED AND APPROVED BY THE ENGINEER.

EXACT CONSTRUCTION LIMITS OF THE TOWN AND COUNTY INTERSECTING ROADS AND DRIVEWAYS SHALL BE DETERMINED BY THE ENGINEER.

PRIVATE AND COMMERCIAL ENTRANCES SHALL BE RESTORED IN KIND MATCHING EXISTING WIDTHS. ALL INTERSECTIONS SHALL BE PAVED TO MATCH THE EXISTING ASPHALTIC WIDTH.

THE TACK COAT PROVIDED FOR IN THE CONTRACT IS INTENDED TO BE APPLIED BETWEEN LAYERS OF HMA PAVEMENT.

THERE ARE UTILITIES WITHIN THE PROJECT LIMITS THAT ARE NOT SHOWN ON THE PLANS. THE CONTRACTOR SHALL COORDINATE HIS CONSTRUCTION ACTIVITIES WITH A CALL TO DIGGERS HOTLINE AND/OR A DIRECT CALL TO THE UTILITIES THAT HAVE FACILITIES IN THE AREA. NOT ALL UTILITIES ARE MEMBERS OF DIGGERS HOTLINE.

WHEN THE QUANTITY OF BASE AGGREGATE DENSE AND HMA, TYPE E-1 IS MEASURED FOR PAYMENT BY THE TON, THE DEPTH OR THICKNESS AS SHOWN ON THE PLAN IS APPROXIMATE AND THE ACTUAL THICKNESS WILL DEPEND UPON THE DISTRIBUTION OF THE MATERIAL AS DIRECTED BY THE ENGINEER IN THE FIELD.

3-INCHES TOPSOIL, SEED, FERTILIZE AND MULCH SHOULDER INSLOPES WHEN INSLOPE WIDTH IS GREATER THAN 5 FT. WHEN INSLOPE WIDTH IS LESS THAN 5 FT., SEED AND FERTILIZE SHOULDER INSLOPE.

THE EXISTING PERMANENT SIGNS ARE NOT TO BE DISTURBED. THE CONTRACTOR SHALL PLACE BASE AGGREGATE DENSE 3/4-INCH FOR SHOULDERS AND TOPSOIL ON THE SHOULDER INSLOPES WITHOUT DISTURBING THE EXISTING PERMANENT SIGNS.

NO MAILBOXES ARE TO BE REMOVED WITHOUT THE APPROVAL OF THE ENGINEER.

3 1/2-INCHES HMA PAVEMENT TYPE E-1 12.5 MM TO BE PLACED IN TWO 1 3/4-INCH LIFTS ON INTERSECTIONS AND MAINLINE. ASPHALTIC MATERIAL PG58-28 SHALL BE USED FOR THE LOWER LAYER AND PG64-28 SHALL BE USED FOR THE UPPER LAYER.

3-INCH ASPHALTIC SURFACE DRIVEWAYS AND FIELD ENTRANCES TO BE PLACED IN ONE LIFT.

FINISHED CENTERLINE ELEVATION TO MATCH EXISTING CENTERLINE ELEVATION IN AREAS REQUIRING PULVERIZATION AND MILLING OF THE EXISTING ASPHALTIC SURFACE AS SHOWN ON THE TYPICAL SECTIONS. RESHAPE THE PULVERIZED MATERIAL TO MEET THE SUPER ELEVATION RATES AS SHOWN IN THE PLAN.

UTILITIES

AT&T
 CHARLES BARTELT
 70 E DIVISION STREET
 FOND DU LAC, WI 54935
 PHONE (920) 929-1013
 FAX (920) 929-1064
 PAGER (414) 318-0479
 CELL (920) 948-2170
 cb1461@att.com

ALLIANT ENERGY
 JASON HOGAN
 4902 N BILTMORE LANE
 MADISON, WI 53718
 PHONE (608) 458-4871
 jasonhogan@alliantenergy.com
 **PRIMARY CONTACT ALL
 CORRESPONDENCE GAS AND ELECTRIC**

STANDARD ABBREVIATIONS AND SYMBOLS

ADJ.	ADJUST	NOR.	NORMAL
ASPH	ASPHALT	P.E.	PRIVATE ENTRANCE
AVE.	AVENUE	P.G.L.	PROFILE GRADE LINE
⊙	BENCH MARK	P.I.	POINT OF INTERSECTION
B-B	BACK TO BACK OF CURB	P.T.	POINT OF TANGENCY
B.A.D.	BASE AGGREGATE DENSE	P.V.C.	POINT OF VERTICAL CURVATURE
B.O.C. or B/C	BACK OF CURB	P.V.I.	POINT OF VERTICAL INTERSECTION
⊕ or CL	CENTERLINE	P.V.T.	POINT OF VERTICAL TANGENCY
CONC.	CONCRETE	P/L	PROPERTY LINE
C.M.P.	CORRUGATED METAL CULVERT PIPE	PVT.	PAVEMENT
C.T.H.	COUNTY TRUNK HIGHWAY	PED.	PEDESTAL
CL.	CLASS	R or RAD	RADIUS
△	DELTA	R.C.P.	REINFORCED CONCRETE PIPE
D.	DEGREE OF CURVE	RECON.	RECONSTRUCT
DW	DRIVEWAY	REQ'D	REQUIRED
E.	EAST	R/L	REFERENCE LINE
EB	EASTBOUND	REM.	REMOVE
E-MAT	EROSION MAT	R/W	RIGHT OF WAY
ELEV	ELEVATION	RD.	ROAD
EOP	EDGE OF PAVEMENT	RT.	RIGHT
EOR	END OF RADIUS	S.	SOUTH
EXIST.	EXISTING	S.E.	SUPER ELEVATION
F-F	FACE TO FACE OF CURB	SAN	SANITARY SEWER
FL	FLOWLINE	SB	SOUTH BOUND
GRAV	GRAVEL	S.D.D.	STANDARD DETAIL DRAWING
GV	GAS VALVE	S.I.	SLOPE INTERCEPT
HDPE	HIGH DENSITY POLYETHYLENE CULVERT PIPE	STA.	STATION
HE	HIGHWAY EASEMENT	S.T.H.	STATE TRUNK HIGHWAY
HMA	HMA	STA.	STATION
H.P.	HIGH POINT	SW	CONCRETE SIDEWALK
HYD.	HYDRANT	T.I.	TEMPORARY INTEREST
L.	LENGTH OF CURVE	TLE	TEMPORARY LIMITED INTEREST
L.V.C.	LENGTH OF VERTICAL CURVE	TYP.	TYPICAL
L.S.	LANDSCAPING	V.C.	VERTICAL CURVE
LT.	LEFT	WB	WESTBOUND
MH	MANHOLE	W	WATERMAIN
MAX	MAXIMUM	WV	WATER VALVE/SHUTOFF
MIN	MINIMUM	⊕	HYDRANT W/AUXILIARY VALVE
NB	NORTH BOUND	⊙	LIGHT POLE
NO.	NUMBER		

DNR LIAISON

DEPARTMENT OF NATURAL RESOURCES
 427 EAST TOWER DRIVE
 SUITE 100
 WAUTOMA, WI 54982

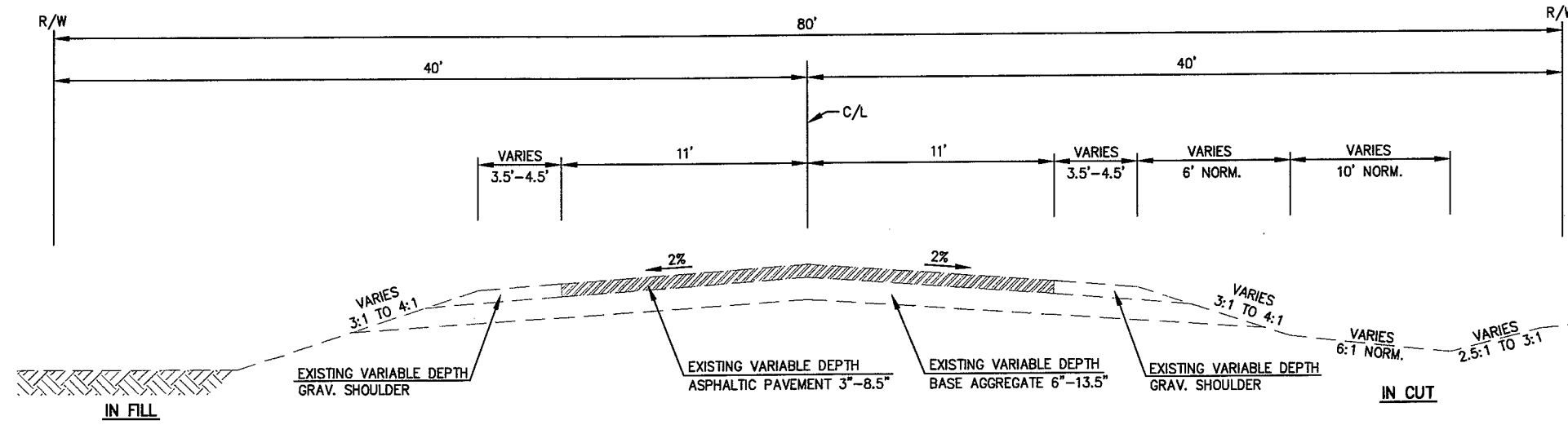
ATTENTION: BOBBI JO FISCHER
 (920) 787-4686 x3007

DESIGN CONTACT

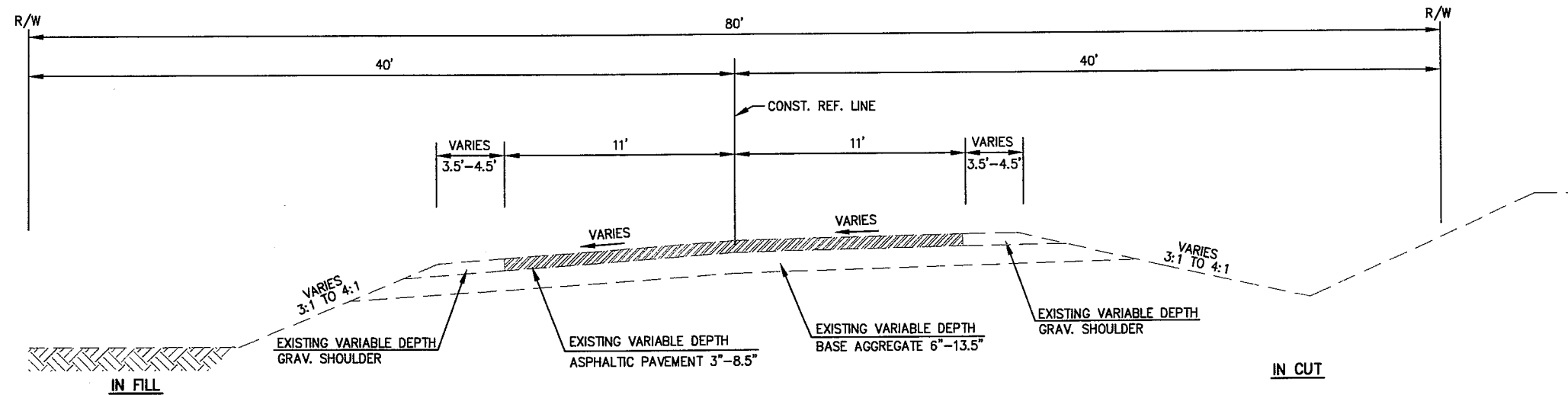
MIKE SIMON
 McMAHON
 1445 McMAHON DRIVE
 NEENAH, WI 54956
 (920) 751-4200



Toll Free (800) 242-8511
 Milwaukee Area (414) 258-1181
 Hearing Impaired TDD (800) 542-2289
 www.DiggersHotline.com

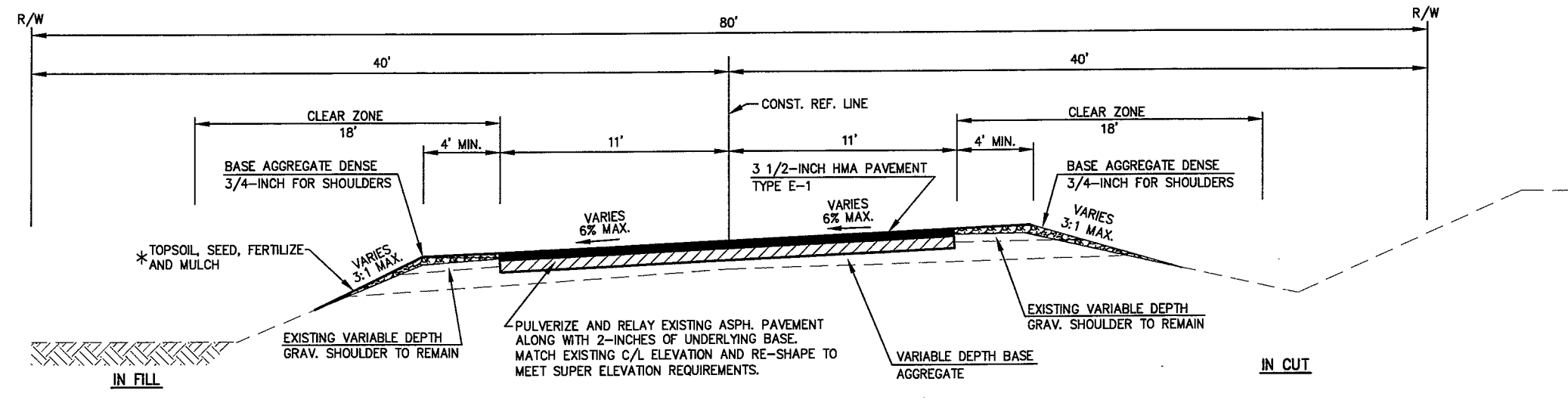


EXISTING TYPICAL CROSS SECTION FOR C.T.H. "D"



EXISTING TYPICAL CROSS SECTION FOR C.T.H. "D" SUPER ELEVATED LOCATIONS

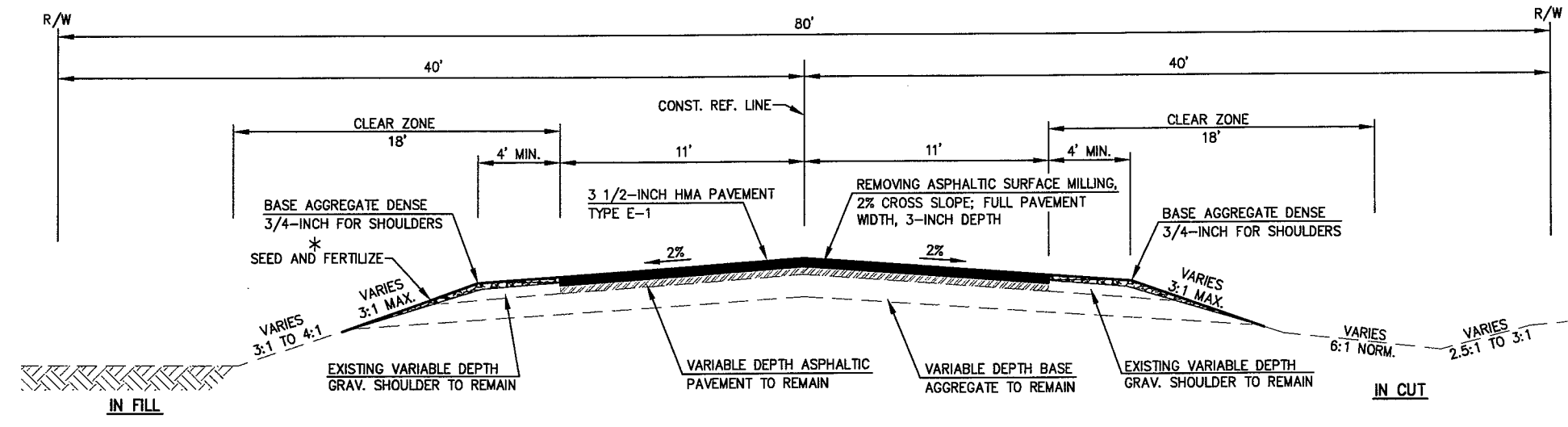
c:\cshuh\w\dwg\0002\990548\00\CTH D TYPICAL SECTIONS.dwg 11/25/09 11:09 AM



* CONSTRUCT SHOULDER INSLOPES WITH BASE AGGREGATE DENSE 3/4-INCH.
 WHEN SHOULDER INSLOPES DO NOT EXCEED 5 FEET (9 FEET OUTSIDE THE EDGE OF PAVEMENT), SEED AND FERTILIZE INSLOPES.
 WHEN WIDTH OF SHOULDER INSLOPES EXCEEDS 5 FEET (9 FEET FROM EDGE OF PAVEMENT), RESTORE AREAS BEYOND THE 5 FOOT LIMIT WITH 3-INCHES TOPSOIL, SEED, FERTILIZER, AND MULCH.

PROPOSED TYPICAL CROSS SECTION FOR C.T.H. "D"
SUPER ELEVATED LOCATIONS REQUIRING PULVERIZED AND RE-LAID PAVEMENT

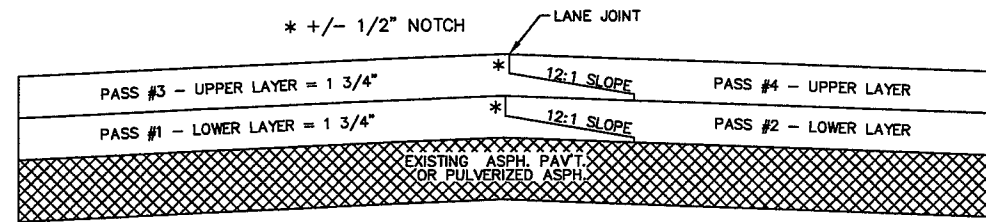
- STA. 28+25 - STA. 35+00
- STA. 47+00 - STA. 56+00
- STA. 111+50 - STA. 121+50
- STA. 152+00 - STA. 163+50
- STA. 194+50 - STA. 204+50
- STA. 230+50 - STA. 241+50



* CONSTRUCT SHOULDER INSLOPES WITH BASE AGGREGATE DENSE 3/4-INCH.
 WHEN SHOULDER INSLOPES DO NOT EXCEED 5 FEET (9 FEET OUTSIDE THE EDGE OF PAVEMENT), SEED AND FERTILIZE INSLOPES.
 WHEN WIDTH OF SHOULDER INSLOPES EXCEEDS 5 FEET (9 FEET FROM EDGE OF PAVEMENT), RESTORE AREAS BEYOND THE 5 FOOT LIMIT WITH 3-INCHES TOPSOIL, SEED, FERTILIZER, AND MULCH.

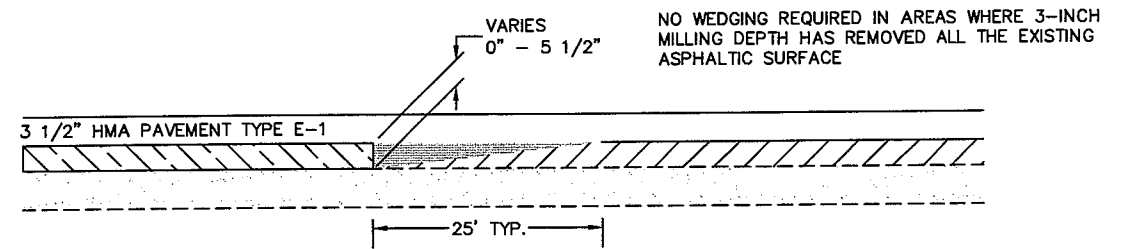
PROPOSED TYPICAL CROSS SECTION FOR C.T.H. "D"

- STA. 35+00 - STA. 47+00
- STA. 56+00 - STA. 111+50
- STA. 121+50 - STA. 152+00
- STA. 163+50 - STA. 194+50
- STA. 204+50 - STA. 230+50
- STA. 241+50 - STA. 426+77.33



LOWER AND UPPER LAYERS

TYPICAL PAVEMENT CROSS SECTION OF TAPERED AND NOTCHED LONGITUDINAL JOINTS

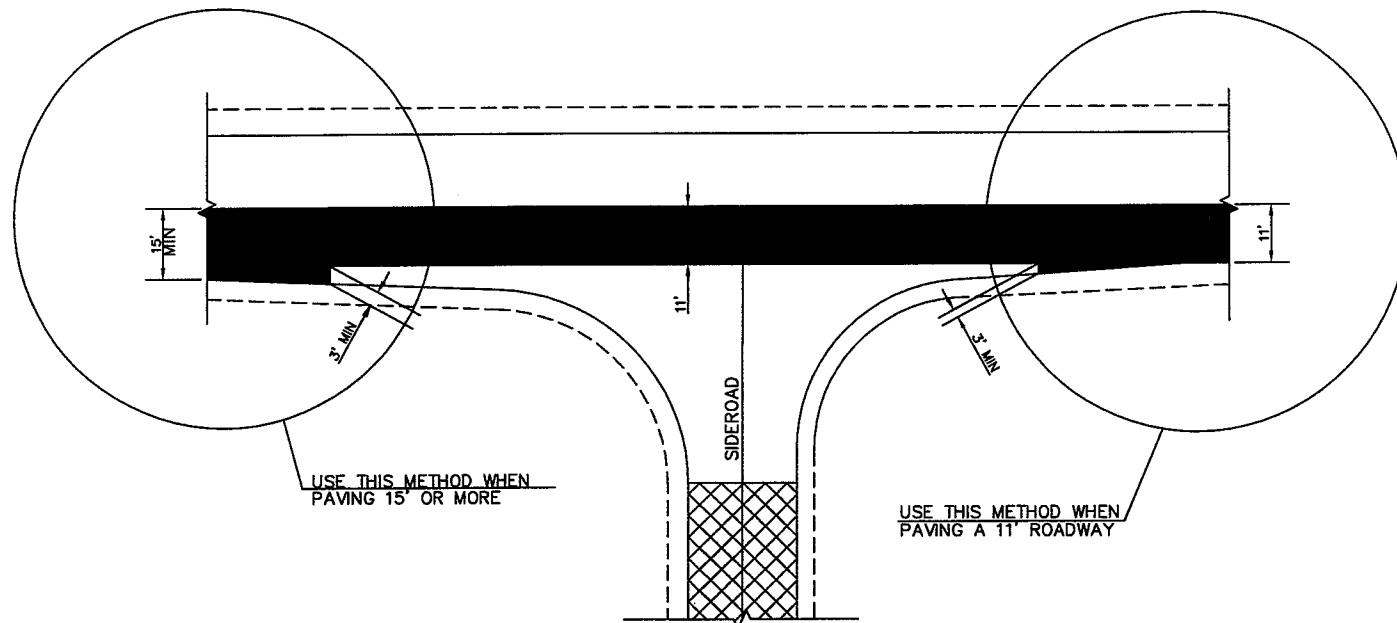


*NOTE: PULVERIZED ASPHALTIC PAVEMENT SHOWN AFTER THE COMPLETION OF RE-SHAPING TO MEET CROSS SLOPE REQUIREMENTS

REMOVAL OF ASPHALTIC MATERIAL AT TRANSITION FROM PULVERIZED ASPHALTIC PAVEMENT TO MILLED SECTIONS TO BE PAID FOR AS REMOVING ASPHALTIC SURFACE, BUTT JOINTS

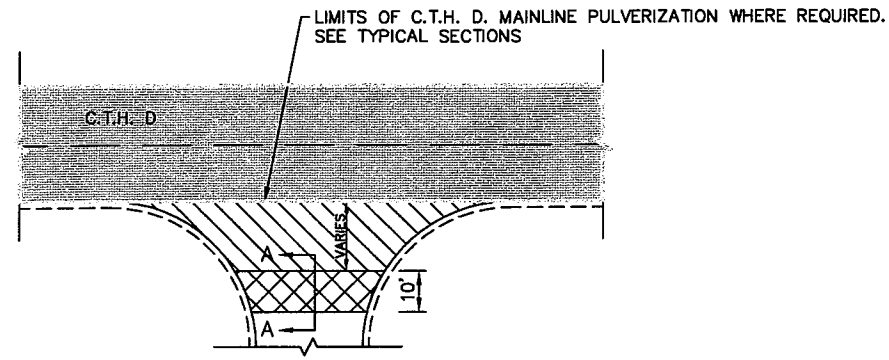
- ASPHALTIC SURFACE PATCHING (WEDGING)
- EXISTING BASE AGGREGATE
- PULVERIZED ASPHALTIC PAVEMENT
- EXISTING MILLED ASPHALTIC SURFACE

TRANSITION DETAIL FROM PULVERIZED ASPHALTIC PAVEMENT TO REMOVING ASPHALTIC SURFACE MILLING



ASPHALTIC CONCRETE PAVING DETAIL AT INTERSECTIONS AND BYPASS LANES

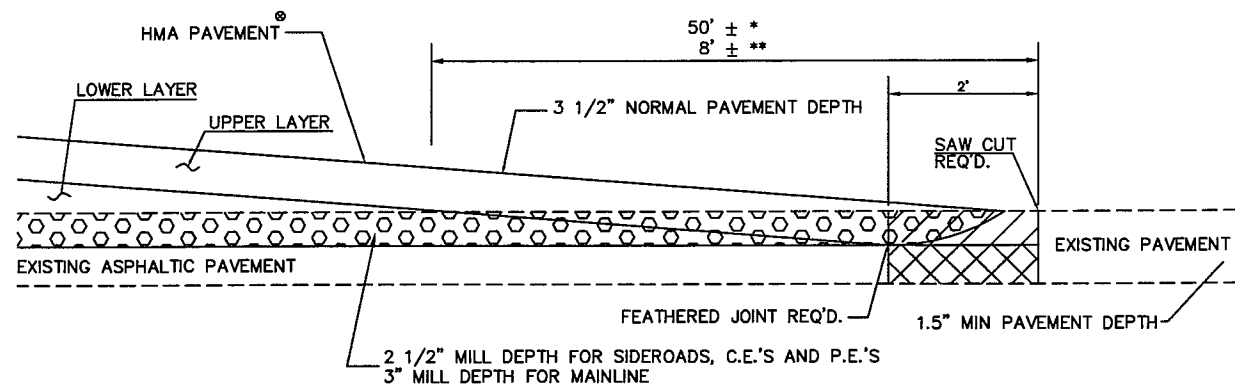
W:\DWC\0002\990548\00\CONSTRUCTION DETAIL-01.dwg 11/27/09 11:37 AM



- REMOVING ASPHALTIC SURFACE MILLING OR PULVERIZE AND RELAY
- REMOVING ASPHALTIC SURFACE MILLING
- REMOVING ASPHALTIC SURFACE BUTT JOINT

NOTE: MATCH POINTS AS SHOWN ON THE PLANS TO BE VERIFIED BY THE ENGINEER IN THE FIELD

REMOVING ASPHALTIC SURFACE BUTT JOINT DETAIL AT P.E.'S, C.E.'S AND INTERSECTIONS



SECTION A-A

- ⊙ 3 1/2-INCH HMA PAVEMENT TYPE E-1 FOR MAINLINE
- ⊙ 3 1/2-INCH HMA PAVEMENT TYPE E-1 FOR SIDEROADS
- ⊙ 3-INCH ASPH. SURFACE DRIVEWAYS & FIELD ENTRANCES FOR DRIVEWAYS

- REMOVING ASPHALTIC SURFACE, MILLING
- REMOVING ASPHALTIC SURFACE, BUTT JOINTS (FULL DEPTH REMOVAL OPTIONAL)
- ASPHALTIC WEDGING (FULL DEPTH REMOVAL OPTIONAL)

* MAINLINE AT S.T.H. 116 MATCH POINT
 ** SIDEROADS, C.E.'S & P.E.'S

STATION TO STATION	LOCATION	ASPHALTIC ITEMS								REMARKS
		460.1101 HMA PAVEMENT TYPE E-1	465.0120 ASPHALTIC SURFACE DRIVEWAYS AND FIELD ENTRANCES	455.0605 TACK COAT	455.0105 ASPHALTIC MATERIAL PG58-28	455.0120 ASPHALTIC MATERIAL PG64-28	460.2000 INCENTIVE DENSITY HMA PAVEMENT	440.4410.S IRI RIDE	465.0110 ASPHALTIC SURFACE PATCHING	
		TON	TON	GAL	TON	TON	DOLLARS	DOLLARS	TON	
28+25 TO 426+77.33	MAINLINE CTH D	20750	-	2450	623	623	13280	30200	-	
-	SIDEROADS	700	-	80	21	21	450	-	-	
-	DRIVEWAYS	-	54	7	-	-	-	-	-	
UNDISTRIBUTED	MAINLINE CTH D	-	-	-	-	-	-	-	1400	2" PATCH AFTER MILLING
TOTALS		21450	54	2537	644	644	13730	30200	1400	

REMOVING ASPHALTIC SURFACE BUTT JOINTS
204.0115

LOCATION	STATION - STATION	S.Y.
CTH D MAINLINE	28+25 - 28+35	25
CTH D MAINLINE	426+67.33 - 426+77.33	115
CTH D MILLING - PULVERIZING TRANSITIONS	-	150
SIDEROADS	-	450
DRIVEWAYS	-	150
TOTAL		890

BASE AGGREGATE DENSE 3/4-INCH
305.0110

STATION TO STATION	LOCATION	TON
28+25 - 426+77.33	CTH D SHOULDERS AND INSLOPES SIDEROAD SHOULDERS	22600 175
TOTAL		22775

WATER
624.0100

LOCATION	STATION - STATION	*MGAL
CTH D MAINLINE AND SIDEROADS	28+25 - 426+77	245
TOTAL		245

*FOR BASE AGGREGATE DENSE AND DUST CONTROL

REMOVING ASPHALTIC SURFACE MILLING
204.0120

STATION	LOCATION	S.Y.
35+00 - 47+00	CTH D MAINLINE	2935
56+00 - 111+50	CTH D MAINLINE	13575
121+50 - 152+00	CTH D MAINLINE	7475
163+50 - 194+50	CTH D MAINLINE	7750
204+50 - 230+50	CTH D MAINLINE	6500
241+50 - 426+77.33	CTH D MAINLINE	46618
-	SIDEROADS	3025
-	DRIVEWAYS	539
TOTAL		88,417

SHAPING SHOULDERS
305.0500

LOCATION	STATION - STATION	STA
CTH D MAINLINE	28+25 - 35+00	14
CTH D MAINLINE	47+00 - 56+00	18
CTH D MAINLINE	111+00 - 122+00	22
CTH D MAINLINE	152+00 - 163+50	24
CTH D MAINLINE	194+50 - 204+50	22
CTH D MAINLINE	230+00 - 242+00	24
TOTAL		124

SILT FENCE

STATION TO STATION	LOCATION	628.1504 SILT FENCE L.F.	628.1520 SILT FENCE MAINTENANCE L.F.
28+25 - 426+77	UNDISTRIBUTED	1250	1250
PROJECT TOTALS		1250	1250

REHEATING HMA PAVEMENT LONGITUDINAL JOINT
460.4100.S

STATION - STATION	LOCATION	STA
28+25 - 426+77	MAINLINE (BINDER COURSE)	399
28+25 - 426+77	MAINLINE (SURFACE COURSE)	399
TOTAL		798

PREPARE FOUNDATION FOR ASPHALTIC PAVING (6456-01-71)
211.0100

STATION TO STATION	PROJECT	LS
28+25 TO 426+77.33	6456-01-71	1
TOTAL		1

PULVERIZE AND RELAY
325.0100

STATION	LOCATION	S.Y.
28+25 - 35+00	CTH D MAINLINE	1650
47+00 - 56+00	CTH D MAINLINE	2250
111+50 - 121+50	CTH D MAINLINE	2450
152+00 - 163+50	CTH D MAINLINE	2850
194+50 - 204+50	CTH D MAINLINE	2450
230+50 - 241+50	CTH D MAINLINE	2700
TOTAL		14,350

LOCATE NO-PASSING ZONES
648.0100

STATION - STATION	LOCATION	MI
28+25 - 426+77	CTH D MAINLINE	7.55
TOTAL		7.55

LANDSCAPING SUMMARY

STATION	LOCATION	625.0100	627.0200	629.0210	630.0120	630.0200
		TOPSOIL	MULCHING **	FERTILIZER TYPE B	SEEDING MIXTURE NO. 20 LB.	SEEDING TEMPORARY LB.
28+25 - 426+77	CTH D	15250	15250	23	950	325
PROJECT TOTALS		15250	15250	23	950	325

**THIS ITEM IS FOR MULCHING SHOULDER INSLOPES WHEN CONSTRUCTED INSLOPE WIDTH IS GREATER THAN 5- FEET

EROSION CONTROL MOBILIZATIONS

LOCATION	628.1905	628.1910
	EROSION CONTROL EACH	EMERGENCY EROSION CONTROL EACH
CTH D	2	2
TOTAL	2	2

TRAFFIC CONTROL DRUMS
643.0300

LOCATION	NO. OF DRUMS*	DAYS*	TOTAL DAYS	REMARKS
CTH D NORTH APPROACH	10	45	450	
CTH D WEST APPROACH	15	45	675	
CTH D	110	20	2200	SHOULDER INSLOPE WORK
CTH B	8	30	240	
EUREKA RD.	6	30	180	
TOWN HALL RD.	6	30	180	
LEE RD.	6	30	180	
RUSHFORD AVE.	12	30	360	
CTH F	16	30	480	
O'REILLY RD.	6	30	180	
MUELLER RD.	6	30	180	
GINNOW RD.	6	30	180	
TOTAL			5485	

TRAFFIC CONTROL SIGNS
643.0900

LOCATION	NO. OF SIGNS*	DAYS*	TOTAL DAYS	REMARKS
CTH D NORTH APPROACH	5	55	275	
CTH D WEST APPROACH	5	55	275	
CTH D W8-20	8	30	240	UNEVEN LANES
CTH D W8-12	44	10	440	NO CENTER STRIPE
CTH D W8-1	18	30	540	BUMP
CTH D W8-7	12	15	180	LOOSE GRAVEL
STH 116 NORTH APPROACH	4	55	220	
STH 116 SOUTH APPROACH	4	55	220	
SIDERoads ROAD WORK AHEAD	15	55	825	
TOTAL			3215	

*FOR INFORMATIONAL PURPOSES ONLY

PAVEMENT MARKING EPOXY 4-INCH
646.0106

LOCATION	STATION - STATION	EDGE LINE WHITE LF
CTH D MAINLINE	28+25 - 105+95 RT.	7770
CTH D MAINLINE	106+88 - 159+70 RT.	5282
CTH D MAINLINE	160+25 - 199+20 RT.	3895
CTH D MAINLINE	200+00 - 264+65 RT.	6465
CTH D MAINLINE	266+85 - 317+75 RT.	5090
CTH D MAINLINE	318+68 - 400+20 RT.	8152
CTH D MAINLINE	401+30 - 426+20 RT.	2490
CTH D MAINLINE	28+25 - 53+22 LT.	2497
CTH D MAINLINE	54+65 - 126+60 LT.	7195
CTH D MAINLINE	127+52 - 146+00 LT.	1848
CTH D MAINLINE	147+00 - 166+67 LT.	1967
CTH D MAINLINE	167+89 - 185+80 LT.	1791
CTH D MAINLINE	186+88 - 199+04 LT.	1216
CTH D MAINLINE	199+90 - 265+21 LT.	6531
CTH D MAINLINE	266+25 - 317+75 LT.	5150
CTH D MAINLINE	318+58 - 373+95 LT.	5537
CTH D MAINLINE	374+66 - 426+20 LT.	5154
TOTAL		78,030

PAVEMENT MARKING SAME DAY EPOXY 4-INCH
646.0406

STATION - STATION	LOCATION	YELLOW LF	EB REMARKS	WB REMARKS
28+25 - 63+00	CTH D	7600	NO PASSING	NO PASSING
63+00 - 73+50	CTH D	1313	PASSING	NO PASSING
73+50 - 87+00	CTH D	338	PASSING	PASSING
87+00 - 96+25	CTH D	1156	NO PASSING	PASSING
96+25 - 109+00	CTH D	2550	NO PASSING	NO PASSING
109+00 - 119+50	CTH D	1313	PASSING	NO PASSING
119+50 - 188+00	CTH D	1713	PASSING	PASSING
188+00 - 196+50	CTH D	1063	NO PASSING	PASSING
196+50 - 199+00	CTH D	63	PASSING	PASSING
199+00 - 207+90	CTH D	1113	PASSING	NO PASSING
207+90 - 222+50	CTH D	365	PASSING	PASSING
222+50 - 233+50	CTH D	1375	NO PASSING	PASSING
233+50 - 242+00	CTH D	1700	NO PASSING	NO PASSING
242+00 - 261+50	CTH D	2438	PASSING	NO PASSING
261+50 - 322+50	CTH D	1525	PASSING	PASSING
322+50 - 328+00	CTH D	688	NO PASSING	PASSING
328+00 - 334+50	CTH D	163	PASSING	PASSING
334+50 - 339+50	CTH D	625	PASSING	NO PASSING
339+50 - 421+00	CTH D	2038	PASSING	PASSING
421+00 - 426+50	CTH D	688	NO PASSING	PASSING
SUBTOTAL		29,827		

PAVEMENT MARKING STOPLINE EPOXY 18-INCH
647.0566

STATION	LOCATION	LF
426+56	CTH D MAINLINE	23
10+34	CTH B	26
TOTAL		49

TEMPORARY PAVEMENT MARKING REFLECTIVE PAINT 4-INCH
649.0200

STATION - STATION	LOCATION	YELLOW LF	EB REMARKS	WB REMARKS
28+25 - 63+00	CTH D LOWER HMA LAYER	7600	NO PASSING	NO PASSING
63+00 - 73+50	CTH D LOWER HMA LAYER	1135	PASSING	NO PASSING
73+50 - 87+00	CTH D LOWER HMA LAYER	108	PASSING	PASSING
87+00 - 96+25	CTH D LOWER HMA LAYER	998	NO PASSING	PASSING
96+25 - 109+00	CTH D LOWER HMA LAYER	2550	NO PASSING	NO PASSING
109+00 - 119+50	CTH D LOWER HMA LAYER	1135	PASSING	NO PASSING
119+50 - 188+00	CTH D LOWER HMA LAYER	548	PASSING	PASSING
188+00 - 196+50	CTH D LOWER HMA LAYER	920	NO PASSING	PASSING
196+50 - 199+00	CTH D LOWER HMA LAYER	20	PASSING	PASSING
199+00 - 207+90	CTH D LOWER HMA LAYER	962	PASSING	NO PASSING
207+90 - 222+50	CTH D LOWER HMA LAYER	117	PASSING	PASSING
222+50 - 233+50	CTH D LOWER HMA LAYER	1188	NO PASSING	PASSING
233+50 - 242+00	CTH D LOWER HMA LAYER	1700	NO PASSING	NO PASSING
242+00 - 261+50	CTH D LOWER HMA LAYER	2107	PASSING	NO PASSING
261+50 - 322+50	CTH D LOWER HMA LAYER	488	PASSING	PASSING
322+50 - 328+00	CTH D LOWER HMA LAYER	600	NO PASSING	PASSING
328+00 - 334+50	CTH D LOWER HMA LAYER	52	PASSING	PASSING
334+50 - 339+50	CTH D LOWER HMA LAYER	540	PASSING	NO PASSING
339+50 - 421+00	CTH D LOWER HMA LAYER	652	PASSING	PASSING
421+00 - 426+50	CTH D LOWER HMA LAYER	600	NO PASSING	PASSING
SUBTOTAL		24,020		

CONSTRUCTION STAKING RESURFACING REFERENCE
650.8000

STATION - STATION	LOCATION	LF
28+25 - 426+76	CTH D CENTERLINE	39852
TOTAL		39,852

SAWING ASPHALT
690.0150

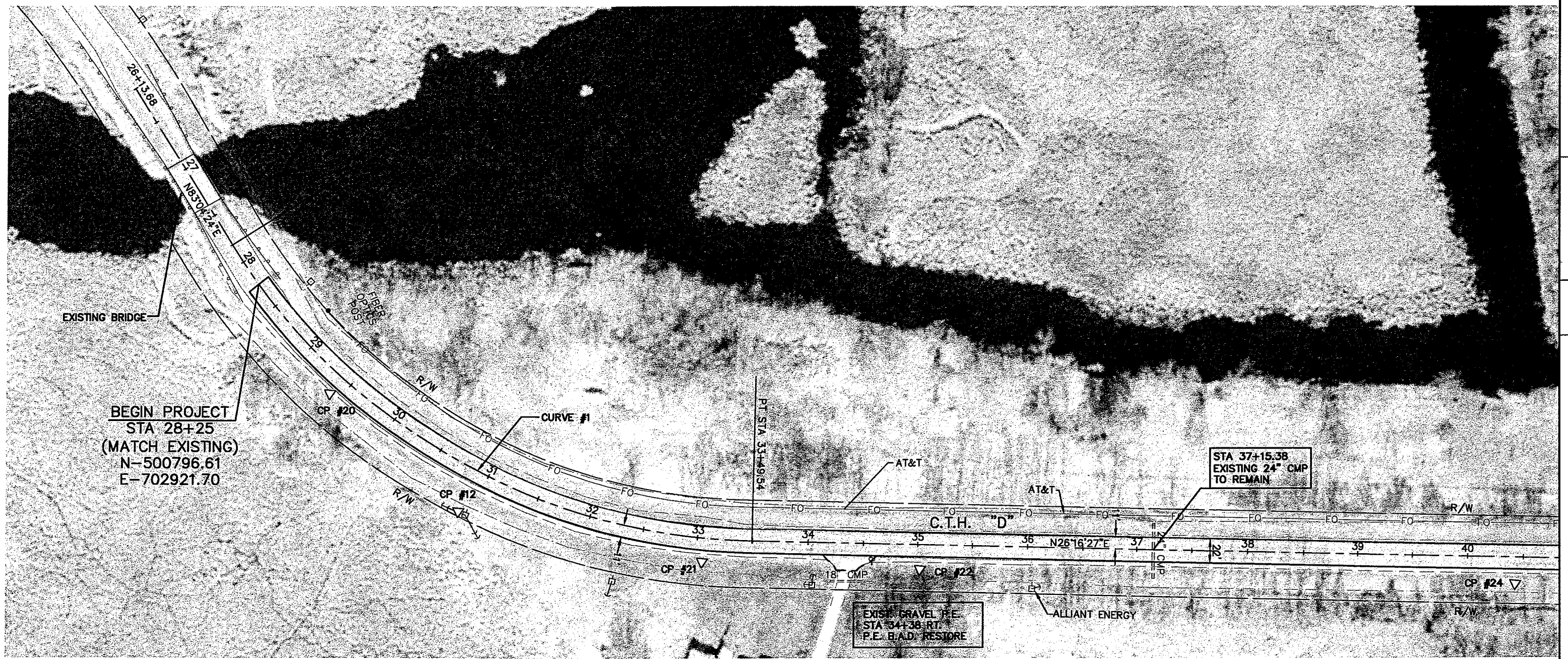
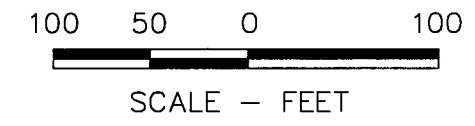
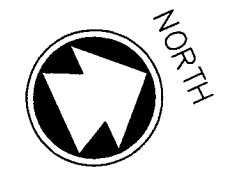
STATION	LOCATION	DESCRIPTION	LF
28+25	CTH D	MATCH PT.	22
10+64	CTH B	MATCH PT.	35.5
9+67	EUREKA RD.	MATCH PT.	31.5
10+38	TOWN HALL RD.	MATCH PT.	28
10+25	LAKE POYGAN RD.	MATCH PT.	43.5
9+75	GEORGES ALLEY	MATCH PT.	23.5
10+35	TOWN HALL RD. EAST	MATCH PT.	62
10+25	LEE RD.	MATCH PT.	55
9+55	RUSHFORD AVE	MATCH PT.	21
10+69	RUSHFORD AVE	MATCH PT.	17
212+75 LT.	CTH D	DRIVEWAY	38
216+62 LT.	CTH D	DRIVEWAY	18
241+00 RT	CTH D	DRIVEWAY	17.5
9+75	CTH F	MATCH PT.	134
10+25	CTH F	MATCH PT.	48
309+29 LT	CTH D	DRIVEWAY	15
9+75	O'REILLY	MATCH PT.	45
10+25	O'REILLY	MATCH PT.	35
329+23 RT.	CTH D	DRIVEWAY	17.5
333+84 LT.	CTH D	DRIVEWAY	18.5
357+13	CTH D	DRIVEWAY	31
10+25	MUELLER RD	MATCH PT.	35
9+75	GINNOW RD	MATCH PT.	55.5
426+77.33	CTH D	MATCH PT.	141
TOTAL			988

LANDMARK REFERENCE MONUMENTS SPECIAL
SPV.0060.01

STATION	LOCATION	DESCRIPTION	EACH
53+65	MAINLINE	STAINLESS STEEL NAIL WITH WASHER, S. 1/4 Sec.19 T 19N R 1 E	1
79+96	MAINLINE	STAINLESS STEEL NAIL WITH WASHER, SW. 1/4 Sec.20 T 19N R 14E	1
106+40	MAINLINE	STAINLESS STEEL NAIL WITH WASHER, S. 1/4 Sec.20 T 19N R 14E	1
239+50	MAINLINE	STAINLESS STEEL NAIL WITH WASHER, SW. 1/4 Sec.23 T 19N R 14E	1
265+72	MAINLINE	STAINLESS STEEL NAIL WITH WASHER, S. 1/4 Sec.23 T 19N R 14E	1
291+93	MAINLINE	STAINLESS STEEL NAIL WITH WASHER, SE. 1/4 Sec.23 T 19N R 14E	1
318+23	MAINLINE	STAINLESS STEEL NAIL WITH WASHER, S. 1/4 Sec.24 T 19N R 14E	1
344+52	MAINLINE	STAINLESS STEEL NAIL WITH WASHER, SE. 1/4 Sec.24 T 19N R 14E	1
374+30	MAINLINE	STAINLESS STEEL NAIL WITH WASHER, S. 1/4 Sec.19 T 19N R 15E	1
400+70	MAINLINE	STAINLESS STEEL NAIL WITH WASHER, SE. 1/4 Sec.19 T 19N R 15E	1
426+90	MAINLINE	STAINLESS STEEL NAIL WITH WASHER, S. 1/4 Sec.20 T 19N R 15E	1
TOTAL			11

REFERENCE LINE
CURVE 1 DATA

P.I. STA. 30+91.32
N = 500827.10
E = 703186.30
DELTA = 56°47'57"
D = 9°59'57"
T = 309.82'
L = 568.04'
R = 573.00'
P.C. STA. 27+81.50
N = 500789.73
E = 702878.75
P.T. STA. 33+49.54
N = 501104.91
E = 703323.45
BK: N83°04'24"E
AH: N26°16'27"E
S.E. = 0.06 1'



POINT #	NORTHING	EASTING	CONTROL POINTS STATION	LOCATION	ELEVATION	DESCRIPTION
C.P. #12	500873.13	703185.69	30+89.90	41.04 RT.	749.50	SETGEAR
C.P. #20	500813.98	703039.47	2941.05	18.08 RT.	751.52	SETGEAR
C.P. #21	501055.88	703321.19	3306.15	21.38 RT.	751.06	SETHUB
C.P. #22	501232.05	703411.06	3502.33	22.28 RT.	749.09	SETHUB
C.P. #24	501715.66	703652.02	4042.62	24.26 RT.	749.76	SETHUB

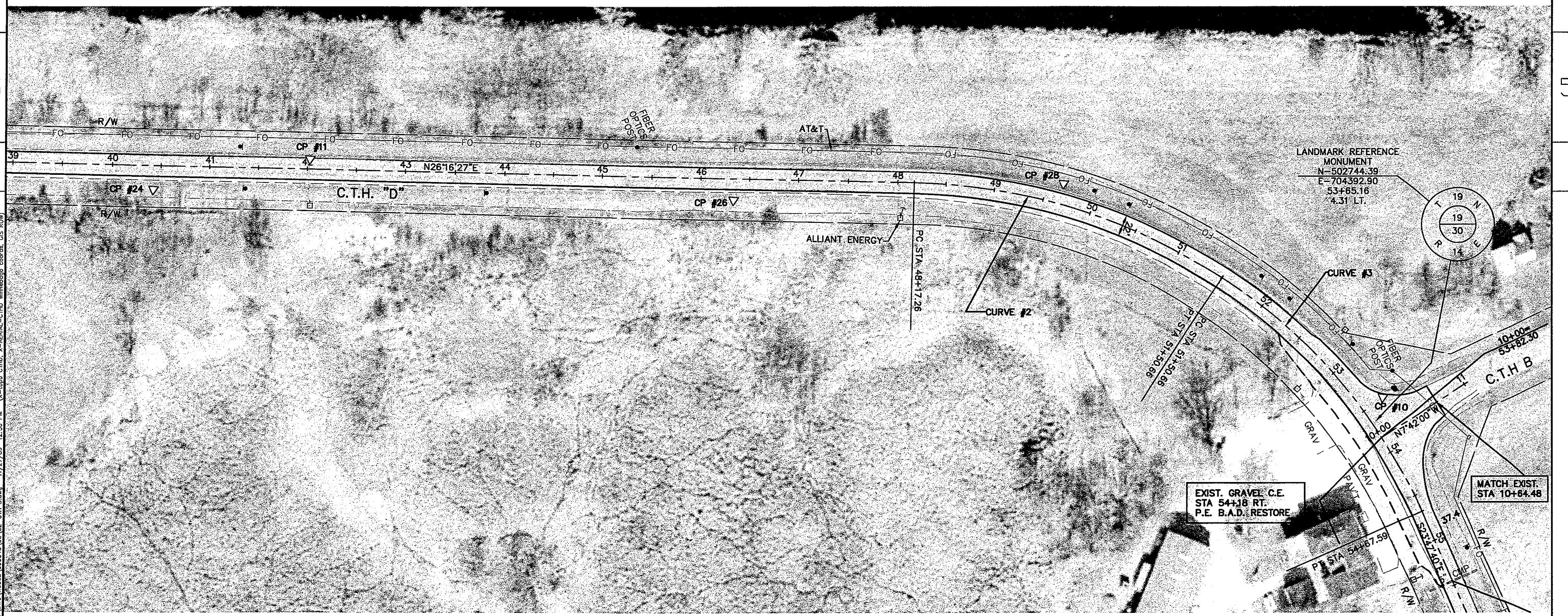
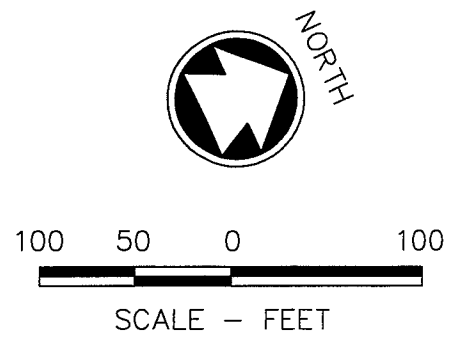
POINT #	NORTHING	EASTING	CONTROL POINTS	STATION	LOCATION	ELEVATION	DESCRIPTION
C.P. #10	502761.16	704373.74	53+49.73	24.24 LT.		761.9	SETMAG
C.P. #11	501874.40	703691.76	42+02.57	10.37 RT.		751.3	SETMAG
C.P. #24	501715.66	703652.02	40+42.36	24.26 RT.		749.76	SETHUB
C.P. #26	502247.06	703911.35	46+33.94	21.57 RT.		749.9982	SETHUB
C.P. #28	502558.38	704038.47	49+85.68	21.16 RT.		754.06677	SETHUB

REFERENCE LINE
CURVE 2 DATA

P.I. STA. 49+88.39
 N = 502574.44
 E = 704048.92
 DELTA = 31°50'15"
 D = 9°32'57"
 T = 171.13'
 L = 568.04'
 R = 573.00'
 P.C. STA. 48+17.26
 N = 502420.99
 E = 703973.16
 P.T. STA. 51+50.66
 N = 502664.84
 E = 704194.22
 BK: N26°16'27"E
 AH: N58°06'42"E
 S.E. = 0.06'/

REFERENCE LINE
CURVE 3 DATA

P.I. STA. 53+13.68
 N = 502750.96
 E = 704332.62
 DELTA = 33°05'37"
 D = 10°26'32"
 T = 163.02'
 L = 316.93'
 R = 548.70'
 P.C. STA. 51+50.66
 N = 502664.84
 E = 704194.22
 P.T. STA. 54+67.59
 N = 502747.53
 E = 704495.62
 BK: N58°06'42"E
 AH: S88°47'40"E
 S.E. = 0.06'/

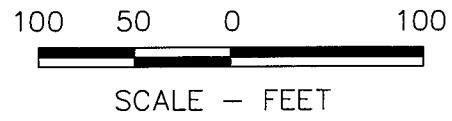


p:\magdski_w\DMC\W0002\990548\00\02-CTH D.dwg 11/27/09 12:58 PM (X-Topo CTHD, X-AERIAL-CTHD Winnebago coords, GIS ROW)

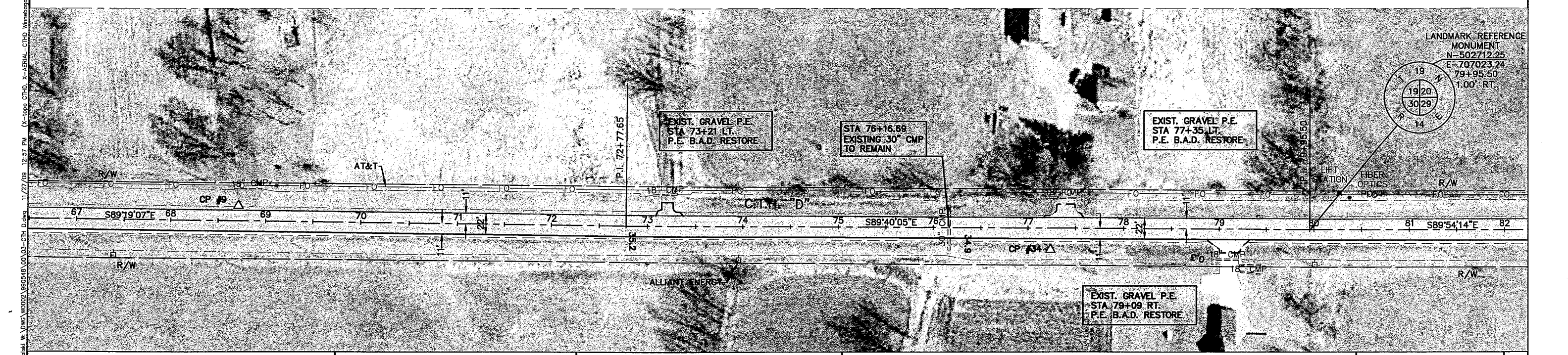
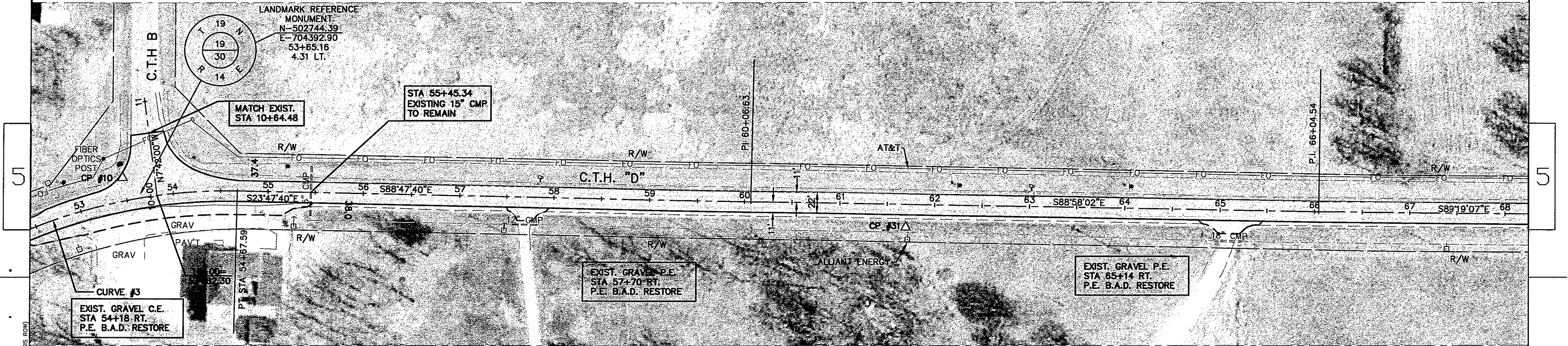
STATE PROJECT NUMBER: 6456-01-71	HWY: C.T.H. D	COUNTY: WINNEBAGO	PLAN DETAIL	SHEET NO:	E
----------------------------------	---------------	-------------------	-------------	-----------	---

REFERENCE LINE
CURVE 3 DATA

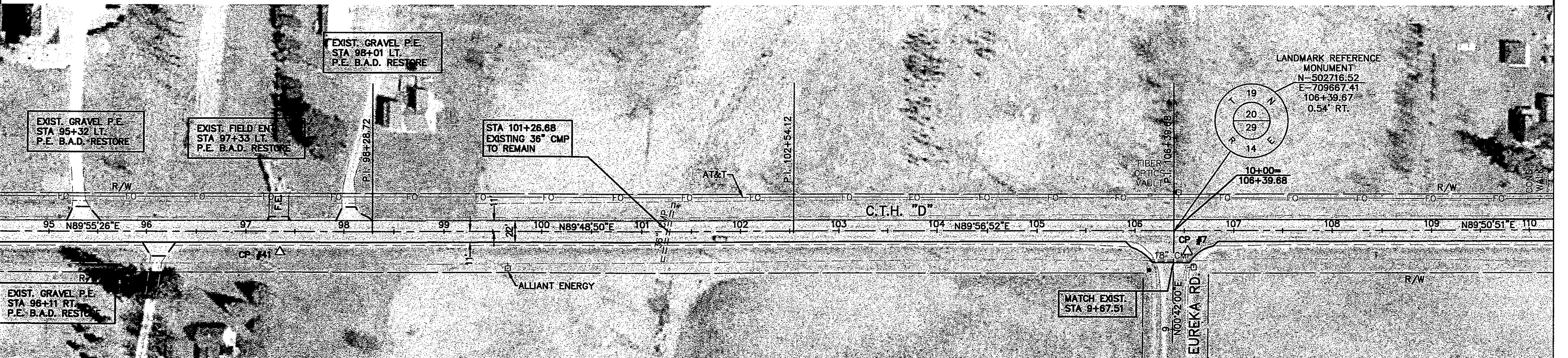
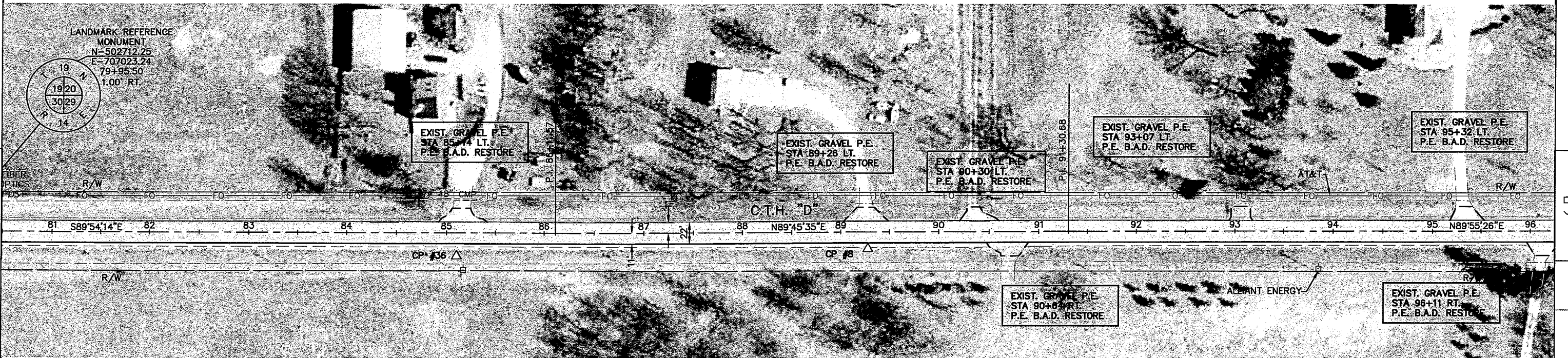
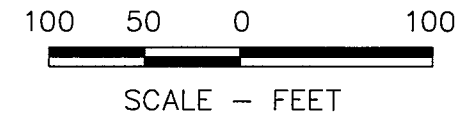
P.I. STA. 53+13.68	P.C. STA. 51+50.66
N = 502750.96	N = 502664.84
E = 704332.62	E = 704194.22
DELTA = 33°05'37"	P.T. STA. 54+67.59
D = 10°26'32"	N = 502747.53
T = 163.02'	E = 704495.62
L = 316.93'	BK: N58°06'42"E
R = 548.70'	AH: S88°47'40"E
	S.E. = 0.06'/"



POINT #	NORTHING	EASTING	STATION	LOCATION	ELEVATION	DESCRIPTION
C.P. #9	502738.02	705899.10	68+71.12	15.77 LT.	767.87	SETGEAR
C.P. #34	502691.94	706751.57	77+23.94	22.88 RT.	764.92	SETHUB
C.P. #10	502761.16	704373.74	53+49.73	24.24 LT.	761.90	SETMAG
C.P. #31	502708.93	705197.39	61+69.95	24.32 RT.	766.64	SETHUB



POINT #	NORTHING	EASTING	STATION	LOCATION	ELEVATION	DESCRIPTION
C.P. #7	502696.13	709681.35	106+53.55	20.96 RT.	759.41	SETMAG
C.P. #8	502696.41	707955.75	89+27.93	17.14 RT.	772.69	SETGEAR
C.P. #36	502688.68	707538.07	85+10.36	23.71 RT.	770.34	SETHUB
C.P. #41	502694.18	708762.65	97+34.88	21.01 RT.	764.83	SETHUB



REFERENCE LINE
CURVE 4 DATA

P.I. STA. 115+79.30	P.C. STA. 112+27.67
N = 502719.55	N = 502718.62
E = 710607.05	E = 710255.42
DELTA = 07°48'42"	P.T. STA. 119+29.84
D = 1°06'45"	N = 502768.27
T = 351.62'	E = 710955.28
L = 702.16'	BK: N89°50'51"E
R = 5150.00'	AK: N82°02'09"E
	S.E. = 0.0255'/

NORTH

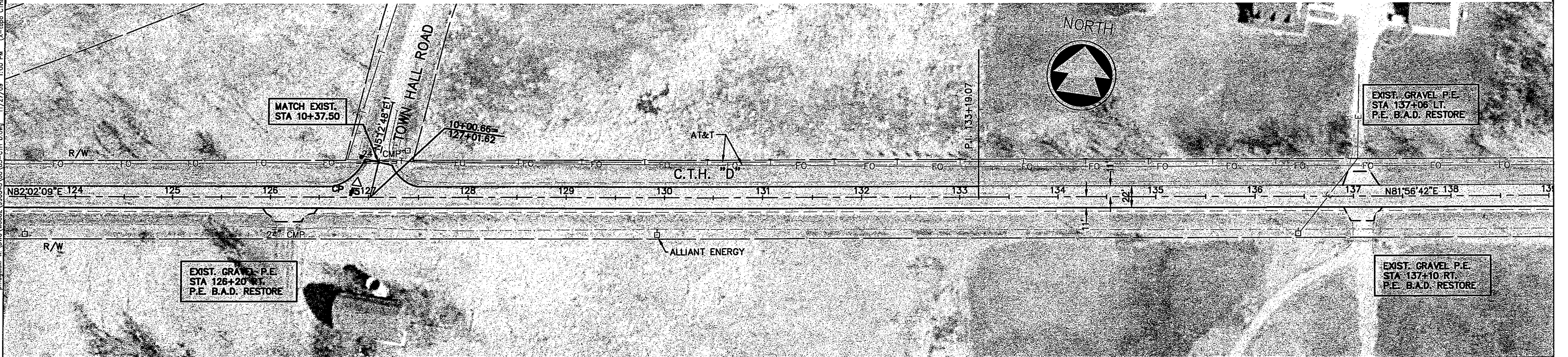
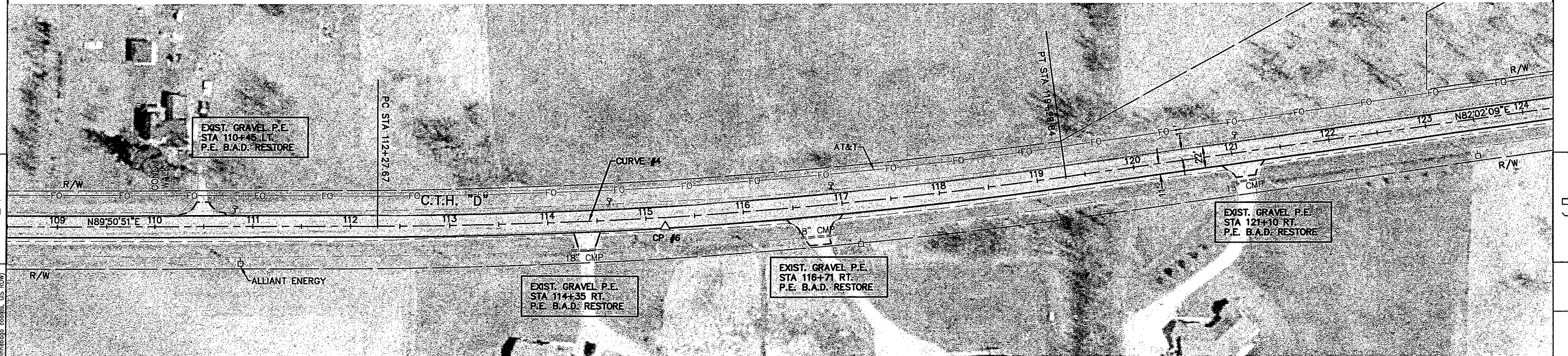


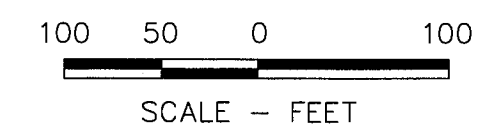
100 50 0 100



SCALE - FEET

POINT #	NORTHING	EASTING	CONTROL POINTS STATION	LOCATION	ELEVATION	DESCRIPTION
C.P. #5	502888.08	711704.36	126+88.29	14.86 LT.	758.68	SETMAG
C.P. #6	502718.13	710547.52	115+19.39	9.54 RT.	764.07	SETMAG

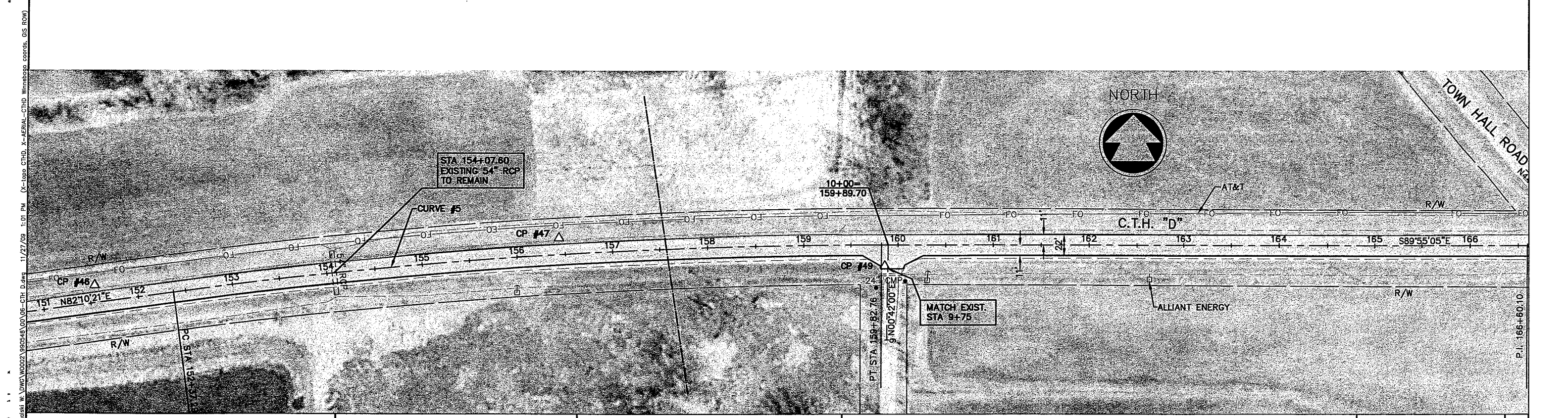
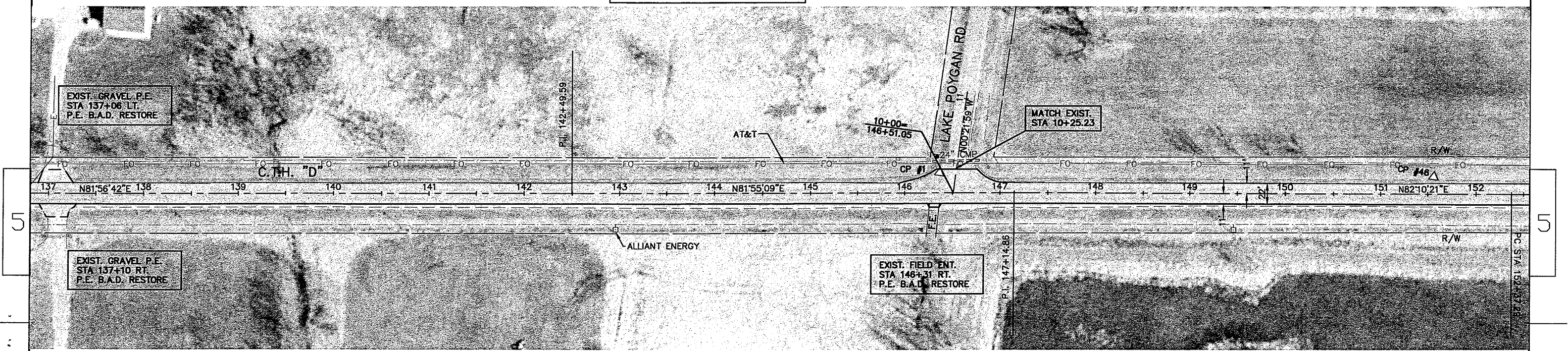




**REFERENCE LINE
CURVE 5 DATA**

P.I. STA. 156+10.02	P.C. STA. 152+37.29
N = 503285.69	N = 503227.70
E = 714801.38	E = 714230.66
DELTA = 07°54'35"	P.T. STA. 159+82.76
D = 1°03'40"	N = 503278.01
T = 373.33'	E = 714973.84
L = 745.47'	BK: N82°10'21"E
R = 5400.00'	AH: S89°55'05"E
	S.E. = 0.0255'/

POINT #	NORTHING	EASTING	CONTROL POINTS STATION	LOCATION	ELEVATION	DESCRIPTION
C.P. #1	503166.70	713632.48	146+36.47	21.38 LT.	755.84	SETMAG
C.P. #46	503234.75	714147.97	151+56.33	18.25 LT.	754.34	SETHUB
C.P. #47	503285.15	714634.44	156+44.21	17.30 LT.	755.64	SETHUB
C.P. #49	503255.76	714977.31	159+86.26	22.25 RT.	755.84	SETMAG



STATE PROJECT NUMBER: 6456-01-71

HWY: C.T.H. D

COUNTY: WINNEBAGO

PLAN DETAIL

SHEET NO:

E

NORTH

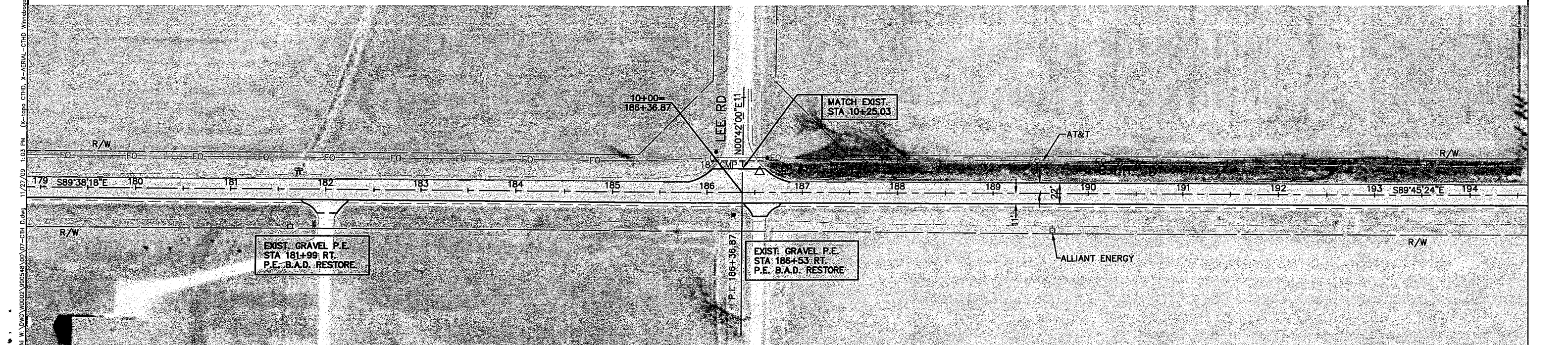
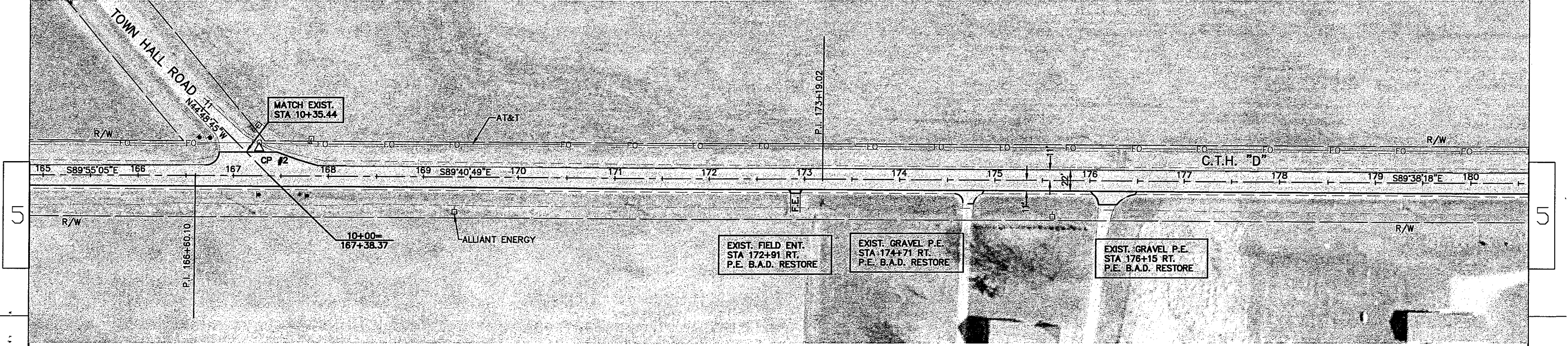


100 50 0 100



SCALE - FEET

POINT #	NORTHING	EASTING	CONTROL POINTS STATION	LOCATION	ELEVATION	DESCRIPTION
C.P. #2	503305.73	715718.13	167+26.89	29.06 LT.	759.23	SETMAG
C.P. #3	503286.80	717646.16	186+55.03	21.84 LT.	767.14	SETMAG



STATE PROJECT NUMBER: 6456-01-71

HWY: C.T.H. D

COUNTY: WINNEBAGO

PLAN DETAIL

SHEET NO:

E

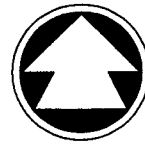
REFERENCE LINE
CURVE 6 DATA

P.I. STA. 198+94.38	P.C. STA. 197+00.41
N = 503259.70	N = 503260.52
E = 718885.41	E = 718691.44
DELTA = 08°32'00"	P.T. STA. 200+87.63
D = 212'13"	N = 503230.10
T = 193.97'	E = 719077.11
L = 387.23'	BK: S89°45'24"E
R = 2600.00'	AH: S81°13'24"E
	S.E. = 0.0421'

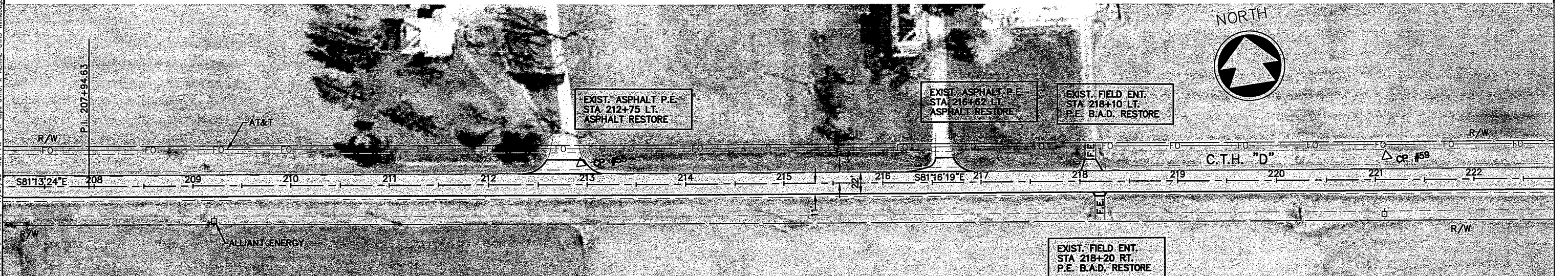
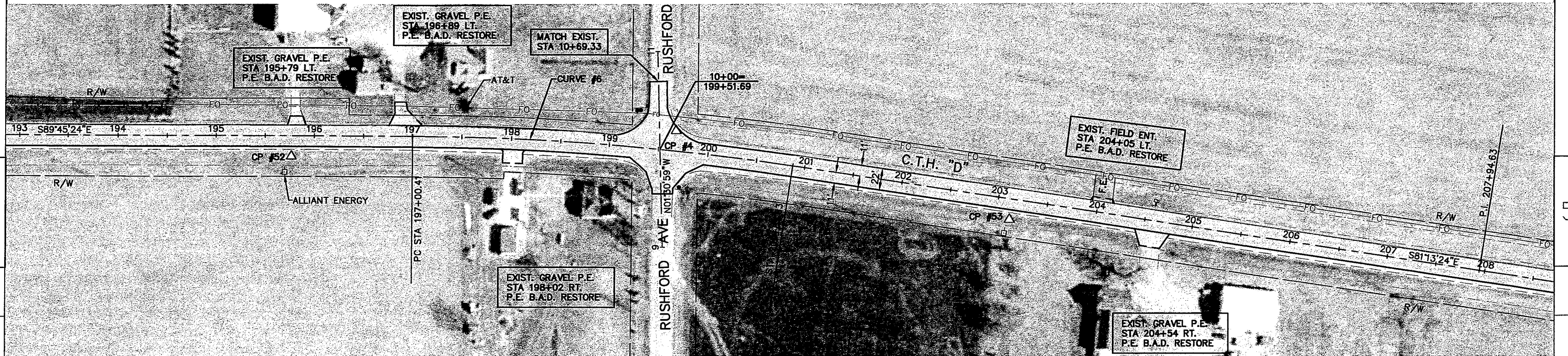
100 50 0 100

SCALE - FEET

NORTH

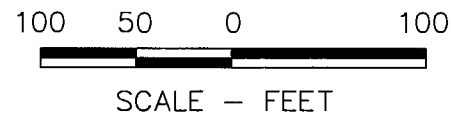


POINT #	NORTHING	EASTING	CONTROL POINTS STATION	LOCATION	ELEVATION	DESCRIPTION
C.P. #4	503266.28	718958.52	199+65.83	20.53 LT.	774.71	SETMAG
C.P. #52	503240.0427	718568.0215	19577.08	21.01	773.3227	SETHUB
C.P. #53	503174.7947	719297.807	20314.18	20.99	774.79364	SETHUB
C.P. #55	503068	720272.51	212+93.78	21.77 LT.	777.97	SETMAG
C.P. #59	502946	721081.3	221+11.73	23.92 LT.	774.69	SETHUB

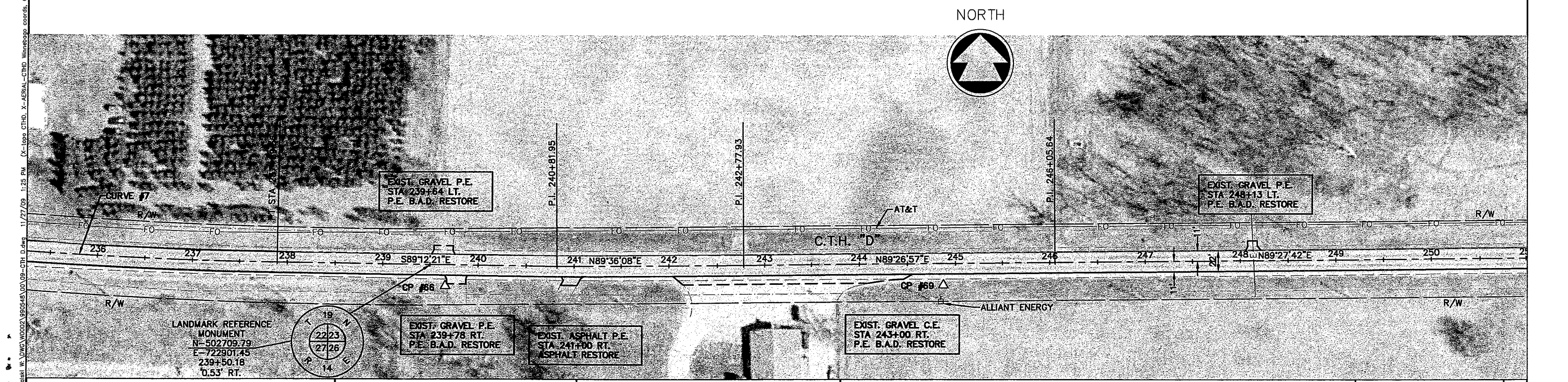
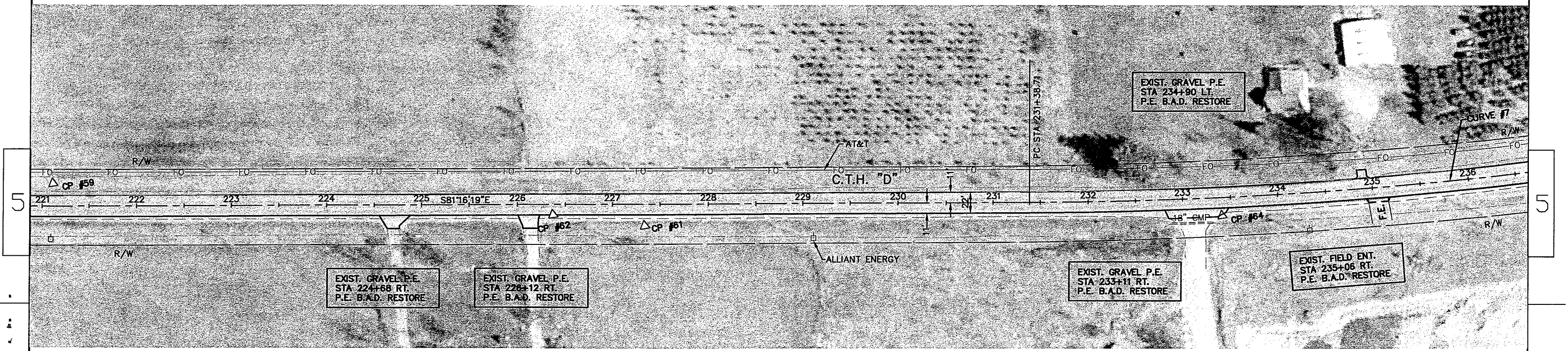


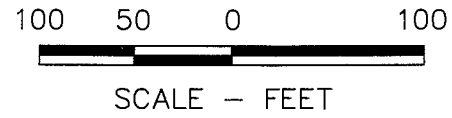
REFERENCE LINE
CURVE 7 DATA

P.I. STA. 234+64.65	P.C. STA. 231+38.71
N = 502717.06	N = 502766.52
E = 722414.93	E = 722092.76
DELTA = 07°56'03"	P.T. STA. 237+89.55
D = 113'09"	N = 502712.54
T = 325.94'	E = 722740.83
L = 650.84'	BK: S81°16'19"E
R = 4700.00'	AH: S89°12'21"E
	S.E. = 0.0287

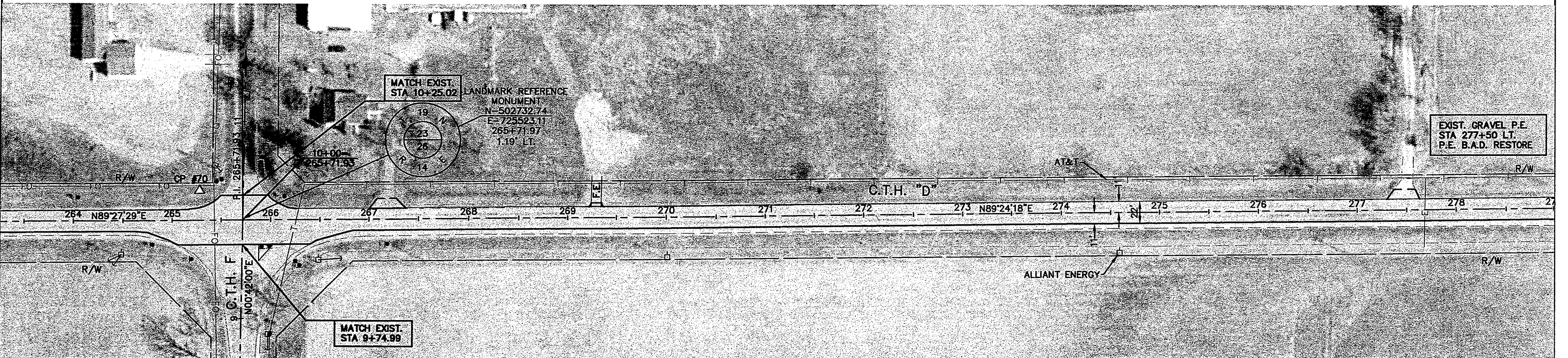
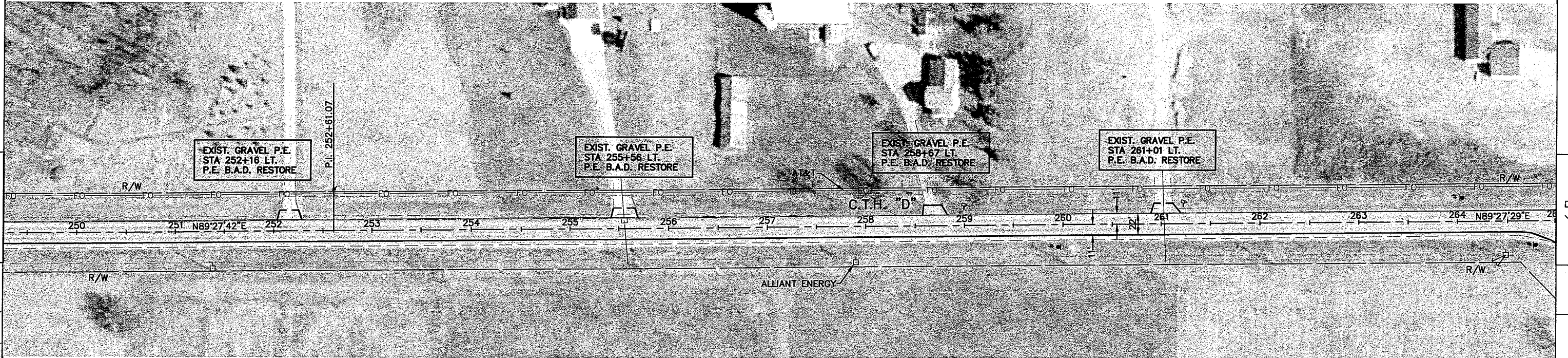


POINT #	NORTHING	EASTING	STATION	LOCATION	ELEVATION	DESCRIPTION
C.P. #59	502946.00	721081.30	221+11.73	23.92 LT.	774.69	SETHUB
C.P. #61	502805.57	721689.47	227+34.16	22.60 RT.	783.15	SETHUB
C.P. #62	502831.84	721595.30	226+37.09	10.92 RT.	782.71	SETMAG
C.P. #64	502721.33	722290.88	233+40.64	18.95 RT.	824.51	SETHUB
C.P. #66	502687.73	722917.32	239+66.35	22.36 RT.	841.35	SETHUB
C.P. #69	502689.24	723438.60	244+87.14	22.63 RT.	847.48	SETHUB





POINT #	NORTHING	EASTING	CONTROL POINTS STATION	LOCATION	ELEVATION	DESCRIPTION
C.P. #70	502761.23	725478.94	265+28.07	30.09 LT.	826.55	SETHUB



STATE PROJECT NUMBER: 6456-01-71

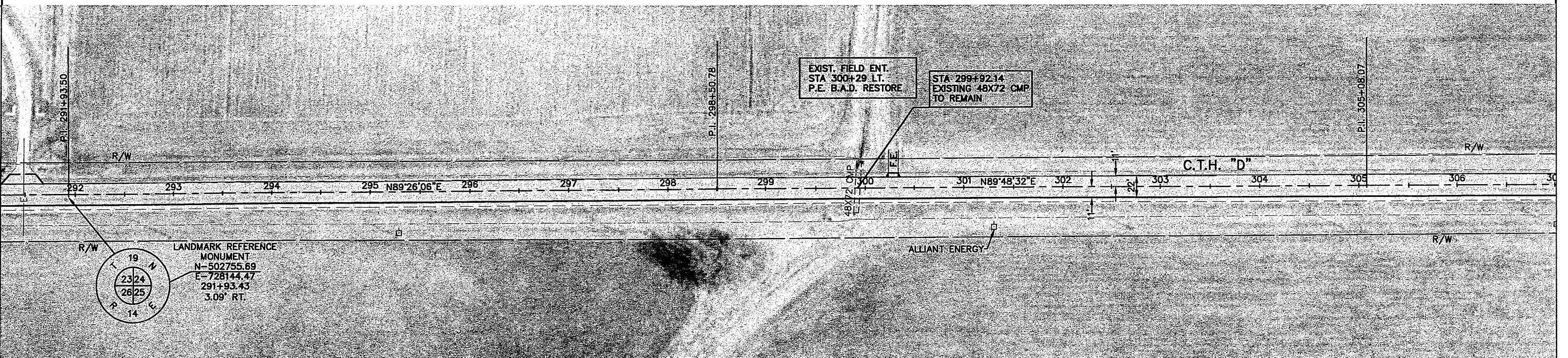
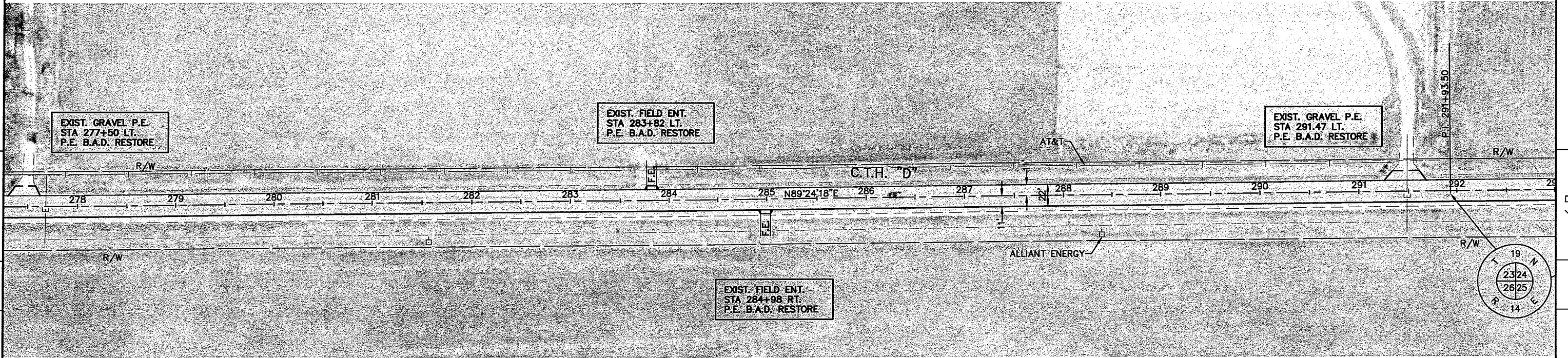
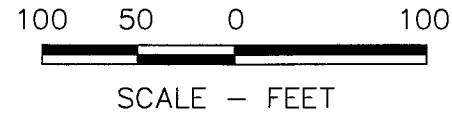
HWY: C.T.H. D

COUNTY: WINNEBAGO

PLAN DETAIL

SHEET NO:

E



11/27/08 1:28 PM (X-Loop CTHD_X-AERIAL-CTHD Winnebago coords_GIS ROW)
 p:\project\w\DWG\W0002\969548\0011-CTH D.dwg

STATE PROJECT NUMBER: 6456-01-71

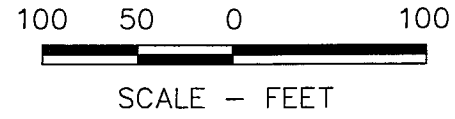
HWY: C.T.H. D

COUNTY: WINNEBAGO

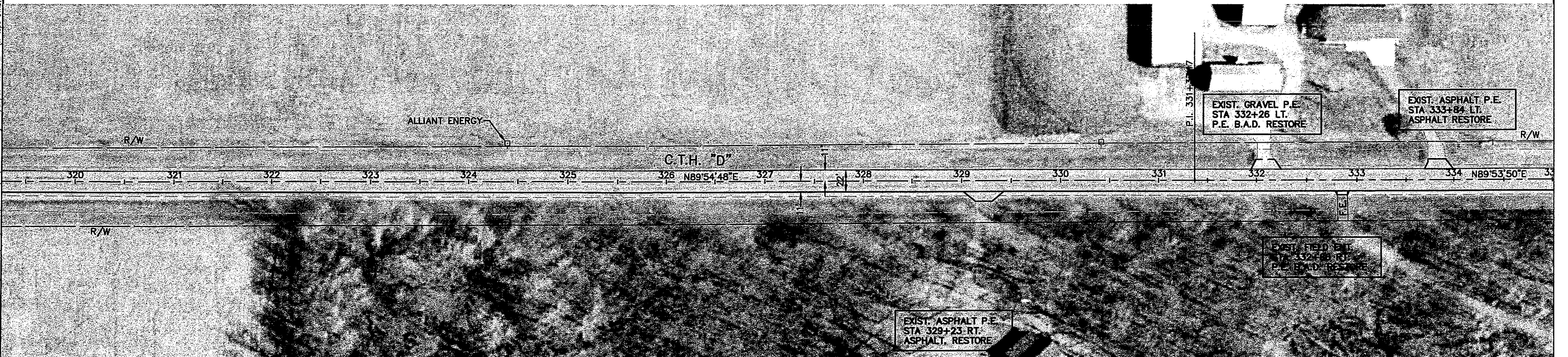
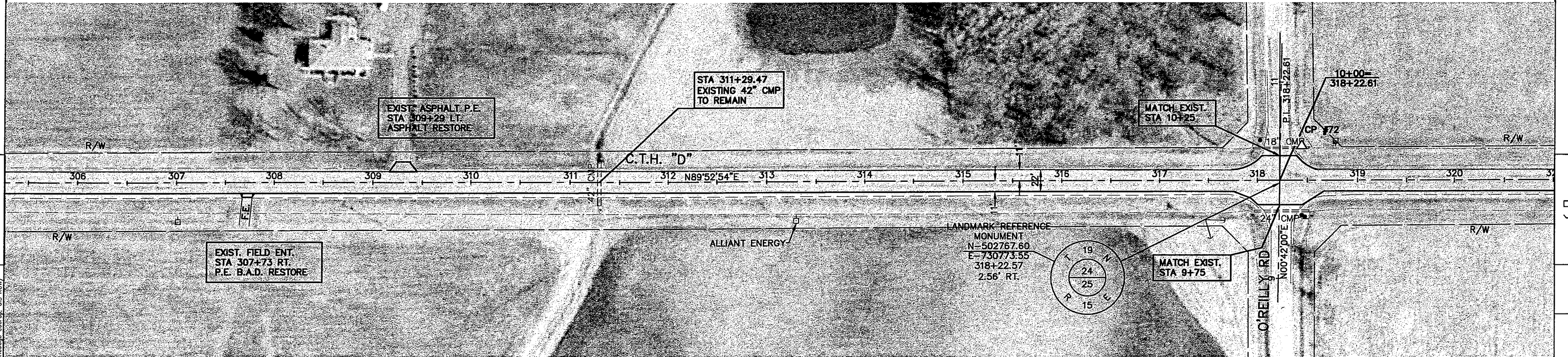
PLAN DETAIL

SHEET NO:

E



POINT #	NORTHING	EASTING	CONTROL POINTS STATION	LOCATION	ELEVATION	DESCRIPTION
C.P. #72	502805.26	730795.62	318+44.70	35.06 LT.	777.59	SETHUB



STATE PROJECT NUMBER: 6456-01-71

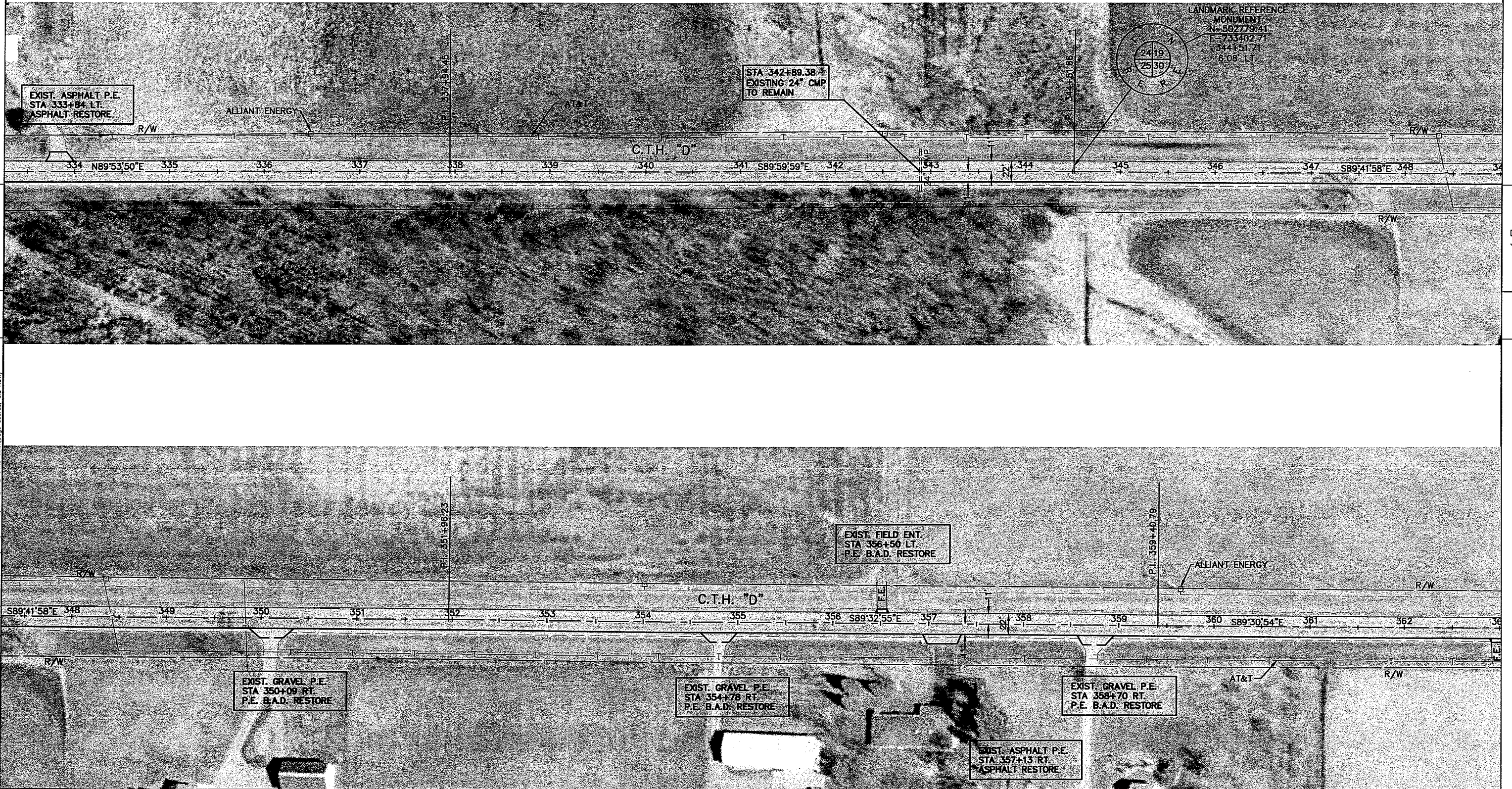
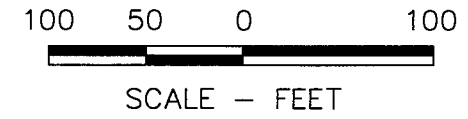
HWY: C.T.H. D

COUNTY: WINNEBAGO

PLAN DETAIL

SHEET NO:

E



STATE PROJECT NUMBER: 6456-01-71	HWY: C.T.H. D	COUNTY: WINNEBAGO	PLAN DETAIL	SHEET NO: E
----------------------------------	---------------	-------------------	-------------	-------------

NORTH

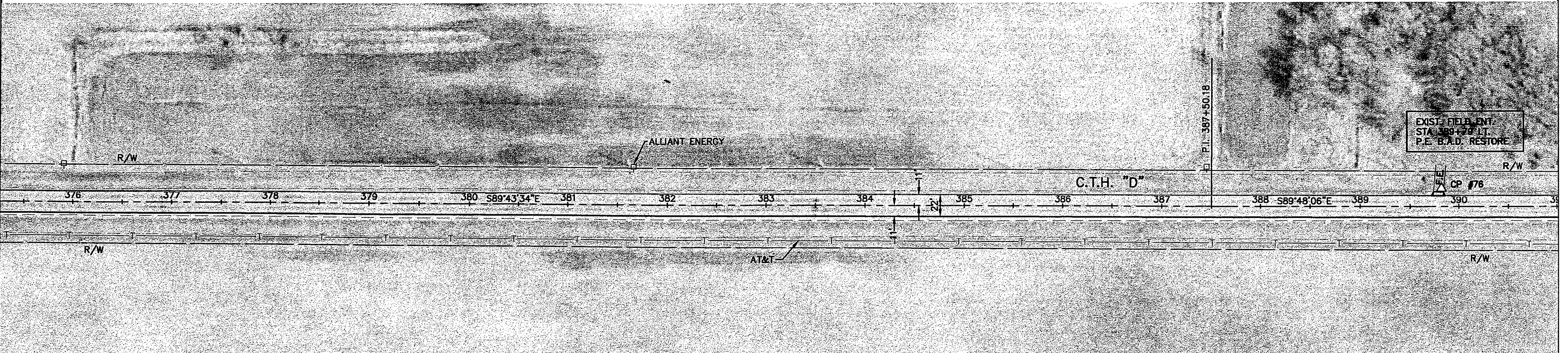
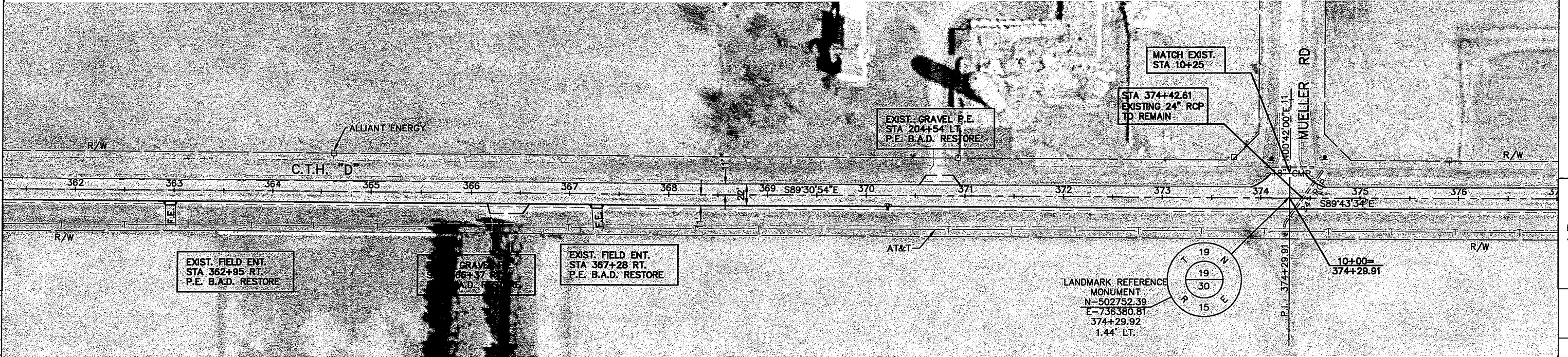


100 50 0 100



SCALE - FEET

POINT #	NORTHING	EASTING	CONTROL POINTS STATION	LOCATION	ELEVATION	DESCRIPTION
C.P. #76	502762.30	737933.09	389+82.16	18.46 LT.	784.71	HUB-SET



pmoapleki.w:\DWG\W0002\990548\00\14-C.T.H. D.dwg 11/27/08 1:36 PM (X=1000 C.T.H. D-AERIAL-CTHD Winnebago.cadd.s. GCS ROW)

STATE PROJECT NUMBER: 6456-01-71

HWY: C.T.H. D

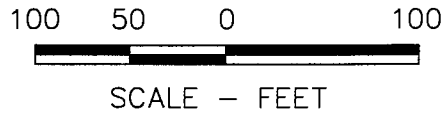
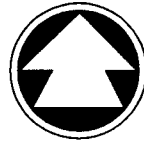
COUNTY: WINNEBAGO

PLAN DETAIL

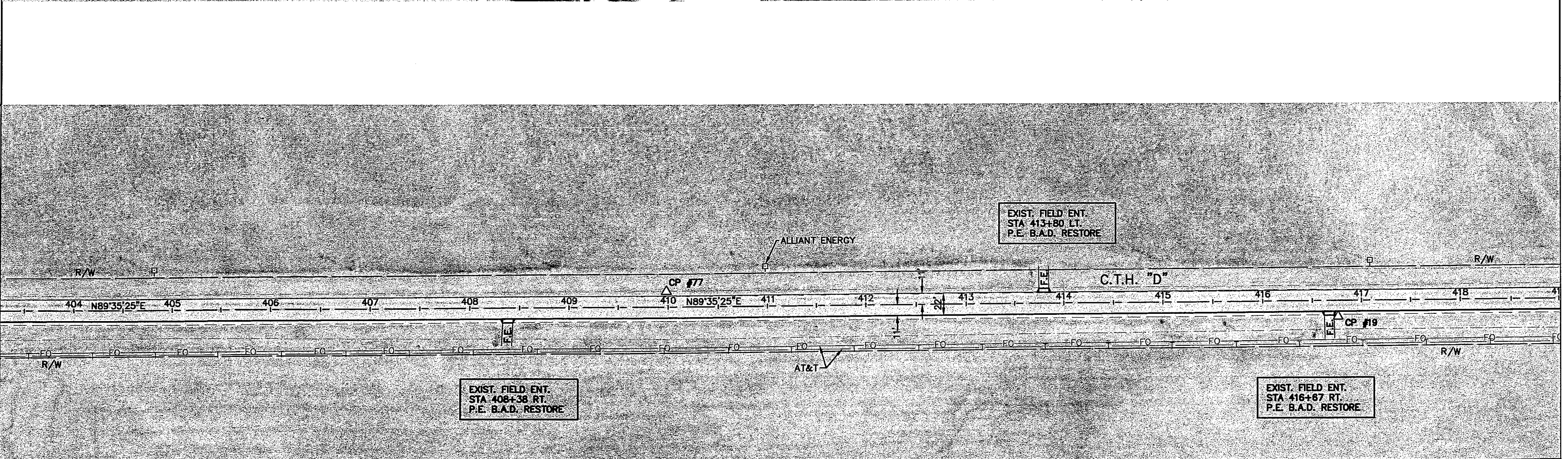
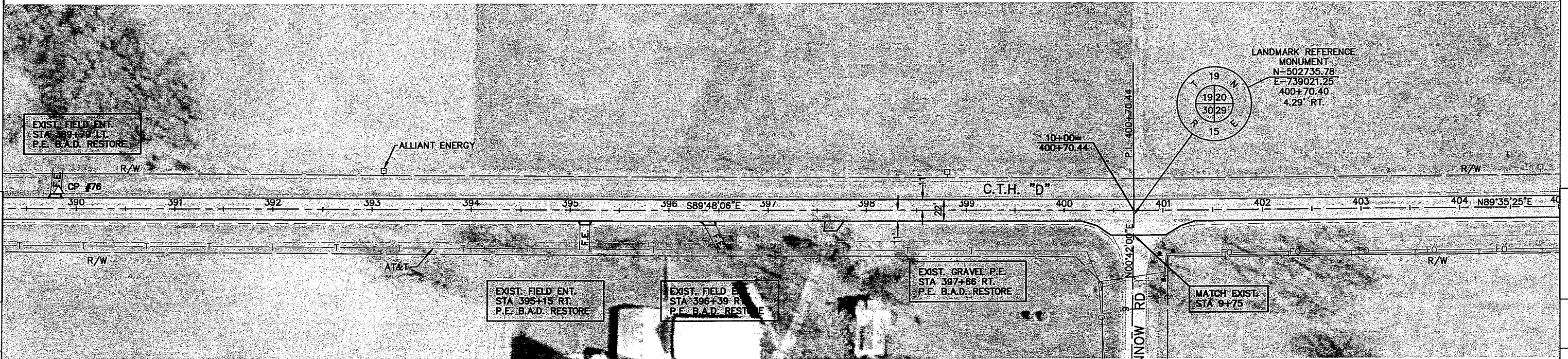
SHEET NO:

E

NORTH



POINT #	NORTHING	EASTING	CONTROL POINTS STATION	LOCATION	ELEVATION	DESCRIPTION
C.P. #19	502735.31	740627.12	416+76.18	16.25 RT.	765.56	SETGEAR
C.P. #76	502762.30	737933.09	389+82.16	18.46 LT.	784.71	HUB-SET
C.P. #77	502762.49	739949.06	409+98.34	15.79 RT.	769.72	HUB-SET



11/27/08 1:38 PM C:\topo\CTHD\X-LEBIAL-CTHD\Workshop\cthd.ctb

STATE PROJECT NUMBER: 6456-01-71

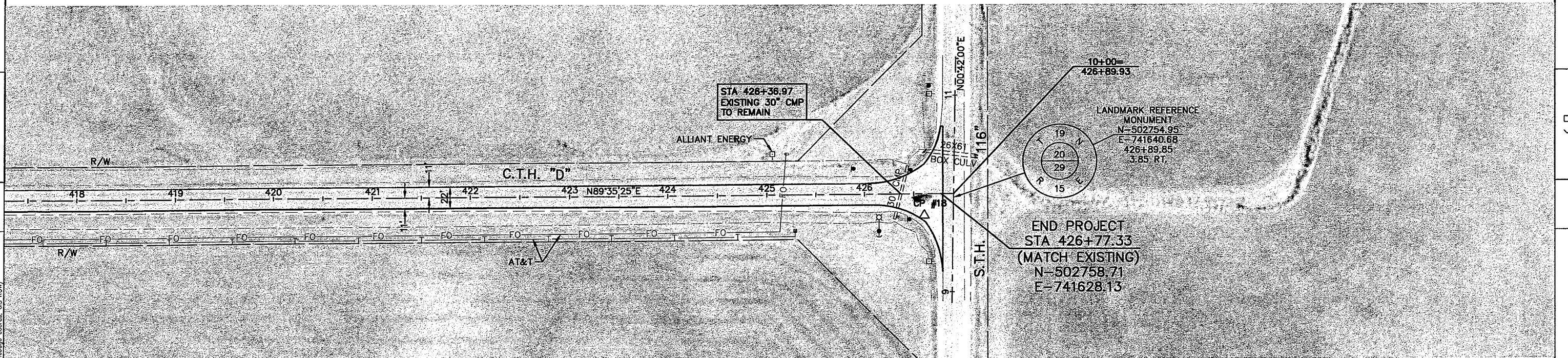
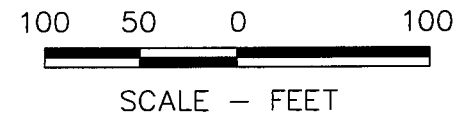
HWY: C.T.H. D

COUNTY: WINNEBAGO

PLAN DETAIL

SHEET NO:

E



POINT #	NORTHING	EASTING	CONTROL POINTS			DESCRIPTION
			STATION	LOCATION	ELEVATION	
C.P. #18	502736.58	741611.55	426+60.60	22.01 RT.	759.18	SETMAG

STATE PROJECT NUMBER: 6456-01-71

HWY: C.T.H. D

COUNTY: WINNEBAGO

PLAN DETAIL

SHEET NO:

E

I:\projects\6456\01\6456-01-71\CADD\11/27/08 1:39 PM (X-Logo CTHD, X-AERIAL-CTHD Winnebago County GIS ROW)